

Manufacturer/Supplier:

WUXI DONGLIN SCI&TECH DEVELOPMENT CO., LTD

Address: A1-203 Mingpin CityII, No.8 Xihudong Road, Liangxi District
Wuxi Jiangsu Province, China

TELE: 86-510-82732223

FAX: 86-510-82720101-8014

Web : www.dldevelop.com

Email: info@dldevelop.com.cn service@dldevelop.com.cn

Product name: Rabbit anti-CD300f Antibody

Catalog: DL94270A

Synonyms: CD300F; CLM1; IGSF13; IREM1; NKIR;
CMRF35-like molecule 1; CLM-1; CD300
antigen-like family member F; Immune receptor
expressed on myeloid cells 1; IREM-1;
Immunoglobulin superfamily member 13; IgSF13;
NK inhibitory receptor; CD300f

Immunogen: KLH-conjugated synthetic peptide encompassing a
sequence within the center region of human
CD300f. The exact sequence is proprietary.

Form: Liquid

Concentration: 1mg/mL

Size: 100 ul/50 ul

Host: Rabbit

Reactivity: Human,Rat

Application: WB

Clonality: Polyclonal

Dilution: WB (1/500 - 1/1000)

Entrez Gene: 146722/287818

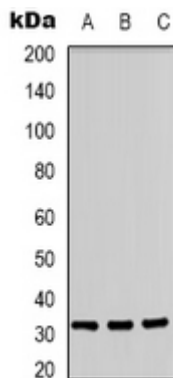
SwissProt: Q8TDQ1/Q566E6

Purification: The antibody was purified by immunogen affinity chromatography.

Buffer: Liquid in 0.42% Potassium phosphate, 0.87% Sodium chloride, pH 7.3, 30% glycerol, and 0.01% sodium azide.

WB description:

Western blot analysis of CD300f expression in A431 (A), Jurkat (B), PC12 (C) whole cell lysates.

**Storage:**

Store at -20°C. Avoid repeated freeze / thaw cycles.