

**Manufacturer/Supplier:**

WUXI DONGLIN SCI&TECH DEVELOPMENT CO., LTD

**Address:** A1-203 Mingpin CityII, No.8 Xihudong Road, Liangxi District  
Wuxi Jiangsu Province, China

**TELE:** 86-510-82732223

**FAX:** 86-510-82720101-8014

**Web :** [www.dldevelop.com](http://www.dldevelop.com)

**Email:** [info@dldevelop.com.cn](mailto:info@dldevelop.com.cn)    [service@dldevelop.com.cn](mailto:service@dldevelop.com.cn)

**Product name:** Rabbit anti-GLUT5 Antibody

**Catalog:** DL94262A

**Synonyms:** GLUT5; Solute carrier family 2, facilitated glucose transporter member 5; Fructose transporter; Glucose transporter type 5, small intestine; GLUT-5

**Immunogen:** KLH-conjugated synthetic peptide encompassing a sequence within the N-term region of human GLUT5. The exact sequence is proprietary.

**Form:** Liquid

**Concentration:** 1mg/mL

**Size:** 100 ul/50 ul

**Host:** Rabbit

**Reactivity:** Human

**Application:** WB

**Clonality:** Polyclonal

**Dilution:** WB (1/500 - 1/1000)

**Entrez Gene:** 6518

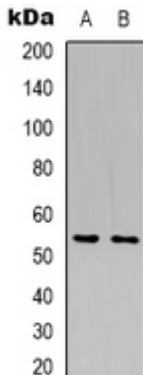
**SwissProt:** P22732

**Purification:** The antibody was purified by immunogen affinity chromatography.

**Buffer:** Liquid in 0.42% Potassium phosphate, 0.87% Sodium chloride, pH 7.3, 30% glycerol, and 0.01% sodium azide.

**WB description:**

Western blot analysis of GLUT5 expression in Hela (A), HepG2 (B) whole cell lysates.



**Storage:**

Store at -20°C. Avoid repeated freeze / thaw cycles.