

Manufacturer/Supplier:

WUXI DONGLIN SCI&TECH DEVELOPMENT CO., LTD

Address: A1-203 Mingpin CityII, No.8 Xihudong Road, Liangxi District
Wuxi Jiangsu Province, China

TELE: 86-510-82732223

FAX: 86-510-82720101-8014

Web : www.dldevelop.com

Email: info@dldevelop.com.cn service@dldevelop.com.cn

Product name: Rabbit anti-CaMKK beta Antibody

Catalog: DL94250A

Synonyms: CAMKKB; KIAA0787;
Calcium/calmodulin-dependent protein kinase
kinase 2; CaM-KK 2; CaM-kinase kinase 2;
CaMKK 2; Calcium/calmodulin-dependent protein
kinase kinase beta; CaM-KK beta; CaM-kinase
kinase beta; CaMKK beta

Immunogen: KLH-conjugated synthetic peptide encompassing a
sequence within the center region of human
CaMKK beta. The exact sequence is proprietary.

Form: Liquid

Concentration: 1mg/mL

Size: 100 ul/50 ul

Host: Rabbit

Reactivity: Human, Mouse, Rat

Application: WB, IHC

Clonality: Polyclonal

Dilution: WB (1/500 - 1/1000),
IHC (1/100 - 1/200)

Entrez Gene: 10645/207565/83506

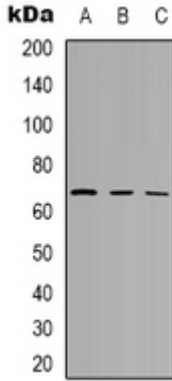
SwissProt: Q96RR4/Q8C078/O88831

Purification: The antibody was purified by immunogen affinity chromatography.

Buffer: Liquid in 0.42% Potassium phosphate, 0.87% Sodium chloride, pH 7.3, 30% glycerol, and 0.01% sodium azide.

WB description:

Western blot analysis of CaMKK beta expression in HEK293T (A), HepG2 (B), SKNSH (C) whole cell lysates.



IHC description:

Immunohistochemical analysis of CaMKK beta staining in human breast cancer formalin fixed paraffin embedded tissue section. The section was pre-treated using heat mediated antigen retrieval with sodium citrate buffer (pH 6.0). The section was then incubated with the antibody at room temperature and detected using an HRP conjugated compact polymer system. DAB was used as the chromogen. The section was then counterstained with haematoxylin and mounted with DPX.

Storage:

Store at -20°C. Avoid repeated freeze / thaw cycles.