

**Manufacturer/Supplier:**

WUXI DONGLIN SCI&TECH DEVELOPMENT CO., LTD

**Address:** A1-203 Mingpin CityII, No.8 Xihudong Road, Liangxi District  
Wuxi Jiangsu Province, China

TELE: 86-510-82732223

FAX: 86-510-82720101-8014

**Web :** [www.dldevelop.com](http://www.dldevelop.com)

Email: [info@dldevelop.com.cn](mailto:info@dldevelop.com.cn)    [service@dldevelop.com.cn](mailto:service@dldevelop.com.cn)

**Product name:** Rabbit anti-POLR3A Antibody

**Catalog:** DL94205A

**Synonyms:** DNA-directed RNA polymerase III subunit RPC1;  
RNA polymerase III subunit C1; DNA-directed  
RNA polymerase III largest subunit; DNA-directed  
RNA polymerase III subunit A; RNA polymerase  
III 155 kDa subunit; RPC155; RNA polymerase III  
subunit C160

**Immunogen:** KLH-conjugated synthetic peptide encompassing a  
sequence within the N-term region of human  
POLR3A. The exact sequence is proprietary.

**Form:** Liquid

**Concentration:** 1mg/mL

**Size:** 100 ul/50 ul

**Host:** Rabbit

**Reactivity:**

Human, Mouse, Rat, Bovine, Chicken, Dog, Monkey, Pig, Rabbit, Zebrafish

**Application:** WB, IHC**Clonality:** Polyclonal

**Dilution:** WB (1/500 - 1/1000),  
IHC (1/100 - 1/200)

**Entrez Gene:** 11128

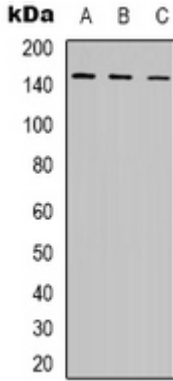
**SwissProt:** O14802

**Purification:** The antibody was purified by immunogen affinity chromatography.

**Buffer:** Liquid in 0.42% Potassium phosphate, 0.87% Sodium chloride, pH 7.3, 30% glycerol, and 0.01% sodium azide.

**WB description:**

Western blot analysis of POLR3A expression in K562 (A), MCF7 (B), COS7 (C) whole cell lysates.



### IHC description:

Immunohistochemical analysis of POLR3A staining in human lung cancer formalin fixed paraffin embedded tissue section. The section was pre-treated using heat mediated antigen retrieval with sodium citrate buffer (pH 6.0). The section was then incubated with the antibody at room temperature and detected using an HRP conjugated compact polymer system. DAB was used as the chromogen. The section was then counterstained with haematoxylin and mounted with DPX.

### Storage:

Store at -20°C. Avoid repeated freeze / thaw cycles.