

Manufacturer/Supplier:

WUXI DONGLIN SCI&TECH DEVELOPMENT CO., LTD

Address: A1-203 Mingpin CityII, No.8 Xihudong Road, Liangxi District
Wuxi Jiangsu Province, China

TELE: 86-510-82732223

FAX: 86-510-82720101-8014

Web : www.dldevelop.com

Email: info@dldevelop.com.cn service@dldevelop.com.cn

Product name: Rabbit anti-B4GALT1 Antibody

Catalog: DL94193A

Synonyms: GGTB2; Beta-1,4-galactosyltransferase 1;
Beta-1,4-GalTase 1; Beta4Gal-T1; b4Gal-T1;
UDP-Gal:beta-GlcNAc
beta-1,4-galactosyltransferase 1;
UDP-galactose:beta-N-acetylglucosamine
beta-1,4-galactosyltransferase 1

Immunogen: KLH-conjugated synthetic peptide encompassing a
sequence within the C-term region of human
B4GALT1. The exact sequence is proprietary.

Form: Liquid

Concentration: 1mg/mL

Size: 100 ul/50 ul

Host: Rabbit

Reactivity:

Human, Mouse, Rat, Bovine, Monkey

Application: WB, IHC**Clonality:** Polyclonal

Dilution: WB (1/500 - 1/1000),
IHC (1/100 - 1/200)

Entrez Gene: 2683/14595

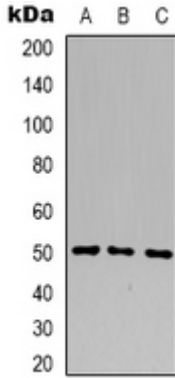
SwissProt: P15291/P15535/P80225

Purification: The antibody was purified by immunogen affinity chromatography.

Buffer: Liquid in 0.42% Potassium phosphate, 0.87% Sodium chloride, pH 7.3, 30% glycerol, and 0.01% sodium azide.

WB description:

Western blot analysis of B4GALT1 expression in HL60 (A), HEK293T (B), Jurkat (C) whole cell lysates.



IHC description:

Immunohistochemical analysis of B4GALT1 staining in human colon cancer formalin fixed paraffin embedded tissue section. The section was pre-treated using heat mediated antigen retrieval with sodium citrate buffer (pH 6.0). The section was then incubated with the antibody at room temperature and detected using an HRP conjugated compact polymer system. DAB was used as the chromogen. The section was then counterstained with haematoxylin and mounted with DPX.

Storage:

Store at -20°C. Avoid repeated freeze / thaw cycles.