

Manufacturer/Supplier:

WUXI DONGLIN SCI&TECH DEVELOPMENT CO., LTD

Address: A1-203 Mingpin CityII, No.8 Xihudong Road, Liangxi District
Wuxi Jiangsu Province, China

TELE: 86-510-82732223

FAX: 86-510-82720101-8014

Web : www.dldevelop.com

Email: info@dldevelop.com.cn service@dldevelop.com.cn

Product name: Rabbit anti-SUPT16H Antibody

Catalog: DL94165A

Synonyms: FACT140; FACTP140; FACT complex subunit
SPT16; Chromatin-specific transcription elongation
factor 140 kDa subunit; FACT 140 kDa subunit;
FACTp140; Facilitates chromatin transcription
complex subunit SPT16; hSPT16

Immunogen: KLH-conjugated synthetic peptide encompassing a
sequence within the C-term region of human
SUPT16H. The exact sequence is proprietary.

Form: Liquid

Concentration: 1mg/mL

Size: 100 ul/50 ul

Host: Rabbit

Reactivity: Human, Mouse, Rat

Application: WB, IHC

Clonality: Polyclonal

Dilution: WB (1/500 - 1/1000),
IHC (1/100 - 1/200)

Entrez Gene: 11198/114741

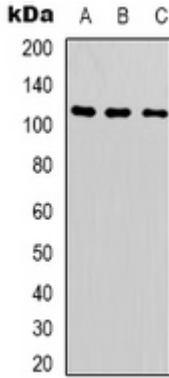
SwissProt: Q9Y5B9/Q920B9

Purification: The antibody was purified by immunogen affinity chromatography.

Buffer: Liquid in 0.42% Potassium phosphate, 0.87% Sodium chloride, pH 7.3, 30% glycerol, and 0.01% sodium azide.

WB description:

Western blot analysis of SUPT16H expression in Hela (A), A549 (B), Jurkat (C) whole cell lysates.



IHC description:

Immunohistochemical analysis of SUPT16H staining in human lung cancer formalin fixed paraffin embedded tissue section. The section was pre-treated using heat mediated antigen retrieval with sodium citrate buffer (pH 6.0). The section was then incubated with the antibody at room temperature and detected using an HRP conjugated compact polymer system. DAB was used as the chromogen. The section was then counterstained with haematoxylin and mounted with DPX.

Storage:

Store at -20°C. Avoid repeated freeze / thaw cycles.