

Manufacturer/Supplier:

WUXI DONGLIN SCI&TECH DEVELOPMENT CO., LTD

Address: A1-203 Mingpin CityII, No.8 Xihudong Road, Liangxi District
Wuxi Jiangsu Province, China

TELE: 86-510-82732223

FAX: 86-510-82720101-8014

Web : www.dldevelop.com

Email: info@dldevelop.com.cn service@dldevelop.com.cn

Product name: Rabbit anti-Glycerol Kinase 1 Antibody

Catalog: DL94137A

Synonyms: GK; Glycerol kinase; GK; Glycerokinase;
ATP:glycerol 3-phosphotransferase; GK3P; GKP3;
GKTB; Putative glycerol kinase 3; GK 3;
Glycerokinase 3; ATP:glycerol
3-phosphotransferase 3; Glycerol kinase, testis
specific 1

Immunogen: KLH-conjugated synthetic peptide encompassing a
sequence within the N-term region of human
Glycerol Kinase 1. The exact sequence is
proprietary.

Form: Liquid

Concentration: 1mg/mL

Size: 100 ul/50 ul

Host: Rabbit

Reactivity:
Human, Mouse, Rat, Bovine

Application: WB, IHC

Clonality: Polyclonal

Dilution: WB (1/500 - 1/1000),
IHC (1/100 - 1/200)

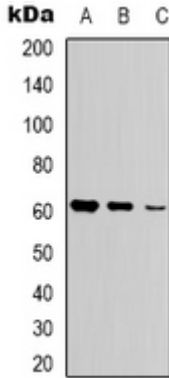
Entrez Gene:

SwissProt: P32189; Q14409

Purification: The antibody was purified by immunogen affinity chromatography.

Buffer: Liquid in 0.42% Potassium phosphate, 0.87% Sodium chloride, pH 7.3, 30% glycerol, and 0.01% sodium azide.

WB description:
Western blot analysis of Glycerol Kinase 1 expression in Jurkat (A), HepG2 (B), HEK293T (C) whole cell lysates.



IHC description:

Immunohistochemical analysis of Glycerol Kinase 1 staining in human liver cancer formalin fixed paraffin embedded tissue section. The section was pre-treated using heat mediated antigen retrieval with sodium citrate buffer (pH 6.0). The section was then incubated with the antibody at room temperature and detected using an HRP conjugated compact polymer system. AEC was used as the chromogen. The section was then counterstained with haematoxylin and mounted with DPX.

Storage:

Store at -20°C. Avoid repeated freeze / thaw cycles.