

**Manufacturer/Supplier:**

WUXI DONGLIN SCI&TECH DEVELOPMENT CO., LTD

**Address:** A1-203 Mingpin CityII, No.8 Xihudong Road, Liangxi District  
Wuxi Jiangsu Province, China

TELE: 86-510-82732223

FAX: 86-510-82720101-8014

**Web :** [www.dldevelop.com](http://www.dldevelop.com)

Email: [info@dldevelop.com.cn](mailto:info@dldevelop.com.cn)    [service@dldevelop.com.cn](mailto:service@dldevelop.com.cn)

**Product name:** Rabbit anti-COP1 (pS387) Antibody

**Catalog:** DL94096A

**Synonyms:** COP1; RNF200; E3 ubiquitin-protein ligase  
RFWD2; Constitutive photomorphogenesis protein  
1 homolog; hCOP1; RING finger and WD repeat  
domain protein 2; RING finger protein 200

**Immunogen:** KLH-conjugated synthetic peptide encompassing a  
sequence within the center region of human COP1.  
The exact sequence is proprietary.

**Form:** Liquid

**Concentration:** 1mg/mL

**Size:** 100 ul/50 ul

**Host:** Rabbit

**Reactivity:** Human, Mouse

**Application:** WB, IP

**Clonality:** Polyclonal

**Dilution:** WB (1/500 - 1/1000), IP  
(1/10 - 1/100)

**Entrez Gene:** 64326/26374

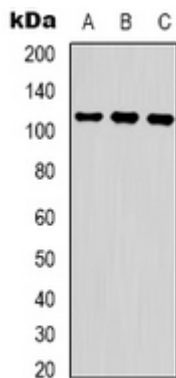
**SwissProt:** Q8NHY2/Q9R1A8

**Purification:** The antibody was purified by immunogen affinity chromatography.

**Buffer:** Liquid in 0.42% Potassium phosphate, 0.87% Sodium chloride, pH 7.3, 30% glycerol, and 0.01% sodium azide.

**WB description:**

Western blot analysis of COP1 (pS387) expression in Jurkat UV-treated (A), 293 UV-treated (B), K562 UV-treated (C) whole cell lysates.



### IP description:

### Storage:

Store at -20°C. Avoid repeated freeze / thaw cycles.