

Manufacturer/Supplier:

WUXI DONGLIN SCI&TECH DEVELOPMENT CO., LTD

Address: A1-203 Mingpin CityII, No.8 Xihudong Road, Liangxi District
Wuxi Jiangsu Province, China

TELE: 86-510-82732223

FAX: 86-510-82720101-8014

Web : www.dldevelop.com

Email: info@dldevelop.com.cn service@dldevelop.com.cn

Product name: Rabbit anti-APPBP2 Antibody

Catalog: DL94073A

Synonyms: KIAA0228; PAT1; Amyloid protein-binding protein
2; Amyloid beta precursor protein-binding protein
2; APP-BP2; Protein interacting with APP tail 1

Immunogen: KLH-conjugated synthetic peptide encompassing a
sequence within the center region of human
APPBP2. The exact sequence is proprietary.

Form: Liquid

Concentration: 1mg/mL

Size: 100 ul/50 ul

Host: Rabbit

Reactivity:

Human, Mouse, Rat, Zebrafish

Application: WB

Clonality: Polyclonal

Dilution: WB (1/500 - 1/1000)

Entrez Gene: 10513/66884/303396

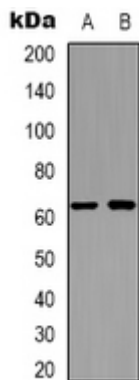
SwissProt: Q92624/Q9DAX9/A5HK05

Purification: The antibody was purified by immunogen affinity chromatography.

Buffer: Liquid in 0.42% Potassium phosphate, 0.87% Sodium chloride, pH 7.3, 30% glycerol, and 0.01% sodium azide.

WB description:

Western blot analysis of APPBP2 expression in Jurkat (A), HEK293T (B) whole cell lysates.



Storage:

Store at -20°C. Avoid repeated freeze / thaw cycles.