

**Manufacturer/Supplier:**

WUXI DONGLIN SCI&TECH DEVELOPMENT CO., LTD

**Address:** A1-203 Mingpin CityII, No.8 Xihudong Road, Liangxi District  
Wuxi Jiangsu Province, China

TELE: 86-510-82732223

FAX: 86-510-82720101-8014

**Web :** [www.dldevelop.com](http://www.dldevelop.com)

Email: [info@dldevelop.com.cn](mailto:info@dldevelop.com.cn) [service@dldevelop.com.cn](mailto:service@dldevelop.com.cn)

**Product name:** Rabbit anti-PI3K p110 gamma Antibody

**Catalog:** DL94034A

**Synonyms:** Phosphatidylinositol 4,5-bisphosphate 3-kinase  
catalytic subunit gamma isoform; PI3-kinase  
subunit gamma; PI3K-gamma; PI3Kgamma;  
PtdIns-3-kinase subunit gamma;  
Phosphatidylinositol 4,5-bisphosphate 3-kinase 110  
kDa catalytic subunit gamma; PtdIns-3-kinase

**Immunogen:** KLH-conjugated synthetic peptide encompassing a  
sequence within the center region of human PI3K  
p110 gamma. The exact sequence is proprietary.

**Form:** Liquid

**Concentration:** 1mg/mL

**Size:** 100 ul/50 ul

**Host:** Rabbit

**Reactivity:** Human, Mouse

**Application:** WB, IHC

**Clonality:** Polyclonal

**Dilution:** WB (1/500 - 1/1000),  
IHC (1/100 - 1/200)

**Entrez Gene:** 5294/30955

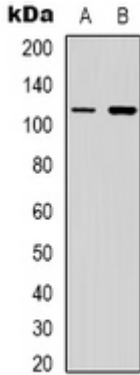
**SwissProt:** P48736/Q9JHG7

**Purification:** The antibody was purified by immunogen affinity chromatography.

**Buffer:** Liquid in 0.42% Potassium phosphate, 0.87% Sodium chloride, pH 7.3, 30% glycerol, and 0.01% sodium azide.

**WB description:**

Western blot analysis of PI3K p110 gamma expression in Jurkat (A), NIH3T3 (B) whole cell lysates.



### IHC description:

Immunohistochemical analysis of PI3K p110 gamma staining in human liver cancer formalin fixed paraffin embedded tissue section. The section was pre-treated using heat mediated antigen retrieval with sodium citrate buffer (pH 6.0). The section was then incubated with the antibody at room temperature and detected using an HRP conjugated compact polymer system. DAB was used as the chromogen. The section was then counterstained with haematoxylin and mounted with DPX.

### Storage:

Store at -20°C. Avoid repeated freeze / thaw cycles.