

**Manufacturer/Supplier:**

WUXI DONGLIN SCI&TECH DEVELOPMENT CO., LTD

**Address:** A1-203 Mingpin CityII, No.8 Xihudong Road, Liangxi District  
Wuxi Jiangsu Province, China

**TELE:** 86-510-82732223

**FAX:** 86-510-82720101-8014

**Web :** [www.dldevelop.com](http://www.dldevelop.com)

**Email:** [info@dldevelop.com.cn](mailto:info@dldevelop.com.cn)    [service@dldevelop.com.cn](mailto:service@dldevelop.com.cn)

**Product name:** Rabbit anti-PPM1K Antibody

**Catalog:** DL94021A

**Synonyms:** PP2CM; Protein phosphatase 1K, mitochondrial;  
PP2C domain-containing protein phosphatase 1K;  
PP2C-like mitochondrial protein; PP2C-type  
mitochondrial phosphoprotein phosphatase; PTMP;  
Protein phosphatase 2C isoform kappa; PP2C-kappa

**Immunogen:** KLH-conjugated synthetic peptide encompassing a  
sequence within the center region of human  
PPM1K. The exact sequence is proprietary.

**Form:** Liquid

**Concentration:** 1mg/mL

**Size:** 100 ul/50 ul

**Host:** Rabbit

**Reactivity:**

Human, Mouse, Bovine

**Application:** WB, IHC**Clonality:** Polyclonal

**Dilution:** WB (1/500 - 1/1000),  
IHC (1/100 - 1/200)

**Entrez Gene:** 152926/243382

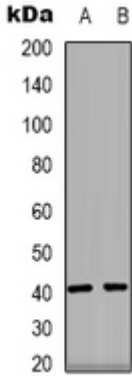
**SwissProt:** Q8N3J5/Q8BXN7

**Purification:** The antibody was purified by immunogen affinity chromatography.

**Buffer:** Liquid in 0.42% Potassium phosphate, 0.87% Sodium chloride, pH 7.3, 30% glycerol, and 0.01% sodium azide.

**WB description:**

Western blot analysis of PPM1K expression in HEK293T (A), human heart (B) whole cell lysates.



### IHC description:

Immunohistochemical analysis of PPM1K staining in human breast cancer formalin fixed paraffin embedded tissue section. The section was pre-treated using heat mediated antigen retrieval with sodium citrate buffer (pH 6.0). The section was then incubated with the antibody at room temperature and detected using an HRP conjugated compact polymer system. DAB was used as the chromogen. The section was then counterstained with haematoxylin and mounted with DPX.

### Storage:

Store at -20°C. Avoid repeated freeze / thaw cycles.