

**Manufacturer/Supplier:**

WUXI DONGLIN SCI&TECH DEVELOPMENT CO., LTD

**Address:** A1-203 Mingpin CityII, No.8 Xihudong Road, Liangxi District  
Wuxi Jiangsu Province, China

TELE: 86-510-82732223

FAX: 86-510-82720101-8014

**Web :** [www.dldevelop.com](http://www.dldevelop.com)

Email: [info@dldevelop.com.cn](mailto:info@dldevelop.com.cn)    [service@dldevelop.com.cn](mailto:service@dldevelop.com.cn)

**Product name:** Rabbit anti-AKR1C2 Antibody

**Catalog:** DL93998A

**Synonyms:** DDH2; Aldo-keto reductase family 1 member C2;  
3-alpha-HSD3; Chlordecone reductase homolog  
HAKRD; Dihydrodiol dehydrogenase 2; DD-2;  
DD2; Dihydrodiol dehydrogenase/bile acid-binding  
protein; DD/BABP;  
Trans-1,2-dihydrobenzene-1,2-diol dehydrogenase;  
Type II

**Immunogen:** KLH-conjugated synthetic peptide encompassing a  
sequence within the center region of human  
AKR1C2. The exact sequence is proprietary.

**Form:** Liquid

**Concentration:** 1mg/mL

**Size:** 100 ul/50 ul

**Host:** Rabbit

**Reactivity:** Human

**Application:** WB, IHC

**Clonality:** Polyclonal

**Dilution:** WB (1/500 - 1/1000),  
IHC (1/100 - 1/200)

**Entrez Gene:** 1646

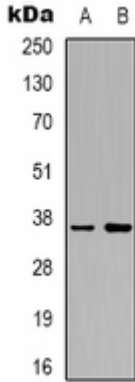
**SwissProt:** P52895

**Purification:** The antibody was purified by immunogen affinity chromatography.

**Buffer:** Liquid in 0.42% Potassium phosphate, 0.87% Sodium chloride, pH 7.3, 30% glycerol, and 0.01% sodium azide.

**WB description:**

Western blot analysis of AKR1C2 expression in HepG2 (A), Hela (B) whole cell lysates.



### IHC description:

Immunohistochemical analysis of AKR1C2 staining in human lung cancer formalin fixed paraffin embedded tissue section. The section was pre-treated using heat mediated antigen retrieval with sodium citrate buffer (pH 6.0). The section was then incubated with the antibody at room temperature and detected using an HRP conjugated compact polymer system. DAB was used as the chromogen. The section was then counterstained with haematoxylin and mounted with DPX.

### Storage:

Store at -20°C. Avoid repeated freeze / thaw cycles.