

Manufacturer/Supplier:

WUXI DONGLIN SCI&TECH DEVELOPMENT CO., LTD

Address: A1-203 Mingpin CityII, No.8 Xihudong Road, Liangxi District
Wuxi Jiangsu Province, China

TELE: 86-510-82732223

FAX: 86-510-82720101-8014

Web : www.dldevelop.com

Email: info@dldevelop.com.cn service@dldevelop.com.cn

Product name: Rabbit anti-TIMP1 Antibody

Catalog: DL93942A

Synonyms: CLGI; TIMP; Metalloproteinase inhibitor 1;
Erythroid-potentiating activity; EPA; Fibroblast
collagenase inhibitor; Collagenase inhibitor; Tissue
inhibitor of metalloproteinases 1; TIMP-1

Immunogen: KLH-conjugated synthetic peptide encompassing a
sequence within the center region of human TIMP1.
The exact sequence is proprietary.

Form: Liquid

Concentration: 1mg/mL

Size: 100 ul/50 ul

Host: Rabbit

Reactivity:

Application: WB, FC

Human, Mouse, Rat, Monkey

Clonality: Polyclonal

Dilution: WB (1/500 - 1/1000),
FC

Entrez Gene: 7076/21857/116510

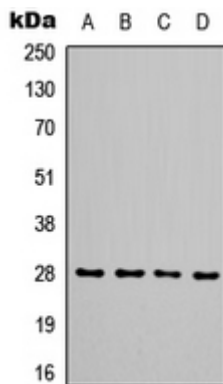
SwissProt: P01033/P12032/P30120

Purification: The antibody was purified by immunogen affinity chromatography.

Buffer: Liquid in 0.42% Potassium phosphate, 0.87% Sodium chloride, pH 7.3, 30% glycerol, and 0.01% sodium azide.

WB description:

Western blot analysis of TIMP1 expression in SHSY5Y (A), HEK293T (B), mouse kidney (C), H9C2 (D) whole cell lysates.



FC description:

Storage:

Store at -20°C. Avoid repeated freeze / thaw cycles.