

Manufacturer/Supplier:

WUXI DONGLIN SCI&TECH DEVELOPMENT CO., LTD

Address: A1-203 Mingpin CityII, No.8 Xihudong Road, Liangxi District
Wuxi Jiangsu Province, China

TELE: 86-510-82732223

FAX: 86-510-82720101-8014

Web : www.dldevelop.com

Email: info@dldevelop.com.cn service@dldevelop.com.cn

Product name: Rabbit anti-POTEH Antibody

Catalog: DL93932A

Synonyms: POTEH; A26C3; ACTBL1; POTE22; POTE
ankyrin domain family member H; ANKRD26-like
family C member 3; Prostate, ovary,
testis-expressed protein on chromosome 22;
POTE-22; POTE_G; A26C2; POTE14; POTE
ankyrin domain family member G; ANKRD26-like
family C member

Immunogen: KLH-conjugated synthetic peptide encompassing a
sequence within the center region of human
POTEH. The exact sequence is proprietary.

Form: Liquid

Concentration: 1mg/mL

Size: 100 ul/50 ul

Host: Rabbit

Reactivity: Human, Mouse

Application: WB

Clonality: Polyclonal

Dilution: WB (1/500 - 1/1000)

Entrez Gene:

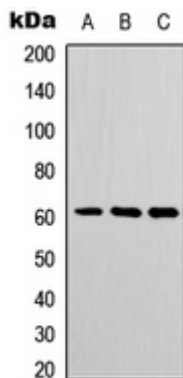
SwissProt: Q6S545; Q6S5H5

Purification: The antibody was purified by immunogen affinity chromatography.

Buffer: Liquid in 0.42% Potassium phosphate, 0.87% Sodium chloride, pH 7.3, 30% glycerol, and 0.01% sodium azide.

WB description:

Western blot analysis of POTEH expression in COLO205 (A), mouse spleen (B), mouse heart (C) whole cell lysates.



Storage:

Store at -20°C. Avoid repeated freeze / thaw cycles.