

Manufacturer/Supplier:

WUXI DONGLIN SCI&TECH DEVELOPMENT CO., LTD

Address: A1-203 Mingpin CityII, No.8 Xihudong Road, Liangxi District
Wuxi Jiangsu Province, China

TELE: 86-510-82732223

FAX: 86-510-82720101-8014

Web : www.dldevelop.com

Email: info@dldevelop.com.cn service@dldevelop.com.cn

Product name: Rabbit anti-POLR3H Antibody

Catalog: DL93931A

Synonyms: KIAA1665; RPC8; DNA-directed RNA polymerase III subunit RPC8; RNA polymerase III subunit C8; DNA-directed RNA polymerase III subunit H; RNA polymerase III subunit 22.9 kDa subunit; RPC22.9

Immunogen: KLH-conjugated synthetic peptide encompassing a sequence within the C-term region of human POLR3H. The exact sequence is proprietary.

Form: Liquid

Concentration: 1mg/mL

Size: 100 ul/50 ul

Host: Rabbit

Reactivity:

Application: WB, IHC

Human, Mouse, Rat, Bovine, Monkey

Clonality: Polyclonal

Dilution: WB (1/500 - 1/1000),
IHC (1/100 - 1/200)

Entrez Gene: 171568/78929

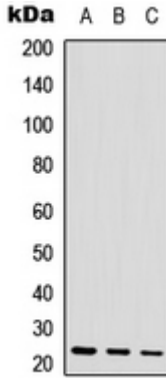
SwissProt: Q9Y535/Q9D2C6

Purification: The antibody was purified by immunogen affinity chromatography.

Buffer: Liquid in 0.42% Potassium phosphate, 0.87% Sodium chloride, pH 7.3, 30% glycerol, and 0.01% sodium azide.

WB description:

Western blot analysis of POLR3H expression in HEK293T (A), mouse heart (B) whole cell lysates.



IHC description:

Immunohistochemical analysis of POLR3H staining in human brain formalin fixed paraffin embedded tissue section. The section was pre-treated using heat mediated antigen retrieval with sodium citrate buffer (pH 6.0). The section was then incubated with the antibody at room temperature and detected using an HRP conjugated compact polymer system. DAB was used as the chromogen. The section was then counterstained with haematoxylin and mounted with DPX.

Storage:

Store at -20°C. Avoid repeated freeze / thaw cycles.