

**Manufacturer/Supplier:**

WUXI DONGLIN SCI&TECH DEVELOPMENT CO., LTD

**Address:** A1-203 Mingpin CityII, No.8 Xihudong Road, Liangxi District  
Wuxi Jiangsu Province, China

TELE: 86-510-82732223

FAX: 86-510-82720101-8014

**Web :** [www.dldevelop.com](http://www.dldevelop.com)

Email: [info@dldevelop.com.cn](mailto:info@dldevelop.com.cn)    [service@dldevelop.com.cn](mailto:service@dldevelop.com.cn)

**Product name:** Rabbit anti-DHRS4 Antibody

**Catalog:** DL93894A

**Synonyms:** Dehydrogenase/reductase SDR family member 4;  
NADPH-dependent carbonyl  
reductase/NADP-retinol dehydrogenase; CR;  
PHCR; NADPH-dependent retinol  
dehydrogenase/reductase; NRDR; humNRDR;  
Peroxisomal short-chain alcohol dehydrogenase;  
PSCD; SCAD-SRL; Short-chai

**Immunogen:** KLH-conjugated synthetic peptide encompassing a  
sequence within the C-term region of human  
DHRS4. The exact sequence is proprietary.

**Form:** Liquid

**Concentration:** 1mg/mL

**Size:** 100 ul/50 ul

**Host:** Rabbit

**Reactivity:** Human

**Application:** WB, IHC

**Clonality:** Polyclonal

**Dilution:** WB (1/500 - 1/1000),  
IHC (1/100 - 1/200)

**Entrez Gene:** 10901

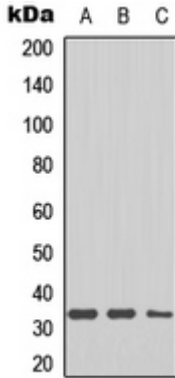
**SwissProt:** Q9BTZ2

**Purification:** The antibody was purified by immunogen affinity chromatography.

**Buffer:** Liquid in 0.42% Potassium phosphate, 0.87% Sodium chloride, pH 7.3, 30% glycerol, and 0.01% sodium azide.

### **WB description:**

Western blot analysis of DHRS4 expression in HepG2 (A), mouse heart (B), mouse brain (C) whole cell lysates.



### IHC description:

Immunohistochemical analysis of DHRS4 staining in human prostate cancer formalin fixed paraffin embedded tissue section. The section was pre-treated using heat mediated antigen retrieval with sodium citrate buffer (pH 6.0). The section was then incubated with the antibody at room temperature and detected using an HRP conjugated compact polymer system. DAB was used as the chromogen. The section was then counterstained with haematoxylin and mounted with DPX.

### Storage:

Store at -20°C. Avoid repeated freeze / thaw cycles.