

**Manufacturer/Supplier:**

WUXI DONGLIN SCI&TECH DEVELOPMENT CO., LTD

**Address:** A1-203 Mingpin CityII, No.8 Xihudong Road, Liangxi District  
Wuxi Jiangsu Province, China

**TELE:** 86-510-82732223

**FAX:** 86-510-82720101-8014

**Web :** [www.dldevelop.com](http://www.dldevelop.com)

**Email:** [info@dldevelop.com.cn](mailto:info@dldevelop.com.cn)    [service@dldevelop.com.cn](mailto:service@dldevelop.com.cn)

**Product name:** Rabbit anti-Cadherin 24 Antibody

**Catalog:** DL93888A

**Synonyms:** CDH11L; Cadherin-24

**Immunogen:** KLH-conjugated synthetic peptide encompassing a sequence within the N-term region of human Cadherin 24. The exact sequence is proprietary.

**Form:** Liquid

**Concentration:** 1mg/mL

**Size:** 100 ul/50 ul

**Host:** Rabbit

**Reactivity:** Human, Mouse, Rat

**Application:** WB, IF/IC

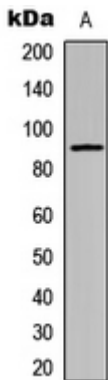
**Clonality:** Polyclonal

**Dilution:** WB (1/500 - 1/1000),  
IF/IC (1/100 - 1/500)

<b>Entrez Gene:</b>	64403/239096
<b>SwissProt:</b>	Q86UP0/Q6PFX6
<b>Purification:</b>	The antibody was purified by immunogen affinity chromatography.
<b>Buffer:</b>	Liquid in 0.42% Potassium phosphate, 0.87% Sodium chloride, pH 7.3, 30% glycerol, and 0.01% sodium azide.

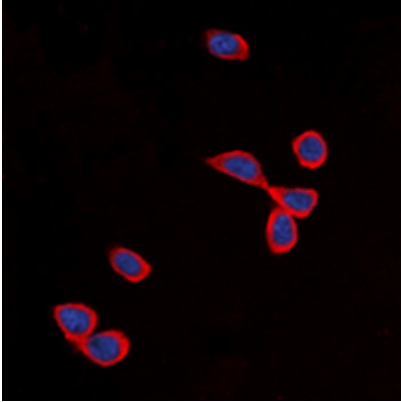
**WB description:**

Western blot analysis of Cadherin 24 expression in SHSY5Y (A) whole cell lysates.

**IF/ICC description:**

Immunofluorescent analysis of Cadherin 24 staining in SHSY5Y

cells. Formalin-fixed cells were permeabilized with 0.1% Triton X-100 in TBS for 5-10 minutes and blocked with 3% BSA-PBS for 30 minutes at room temperature. Cells were probed with the primary a



### Storage:

Store at -20°C. Avoid repeated freeze / thaw cycles.