

Manufacturer/Supplier:

WUXI DONGLIN SCI&TECH DEVELOPMENT CO., LTD

Address: A1-203 Mingpin CityII, No.8 Xihudong Road, Liangxi District
Wuxi Jiangsu Province, China

TELE: 86-510-82732223

FAX: 86-510-82720101-8014

Web : www.dldevelop.com

Email: info@dldevelop.com.cn service@dldevelop.com.cn

Product name: Rabbit anti-TAO1 Antibody

Catalog: DL93843A

Synonyms: KIAA1361; MAP3K16; MARKK;
Serine/threonine-protein kinase TAO1; Kinase from
chicken homolog B; hKFC-B; MARK Kinase;
MARKK; Prostate-derived sterile 20-like kinase 2;
PSK-2; PSK2; Prostate-derived STE20-like kinase
2; Thousand and one amino acid protein ki

Immunogen: KLH-conjugated synthetic peptide encompassing a
sequence within the center region of human TAO1.
The exact sequence is proprietary.

Form: Liquid

Concentration: 1mg/mL

Size: 100 ul/50 ul

Host: Rabbit

Reactivity: Human, Mouse, Rat

Application: WB, IHC

Clonality: Polyclonal

Dilution: WB (1/500 - 1/1000),
IHC (1/100 - 1/200)

Entrez Gene: 57551/216965/286993

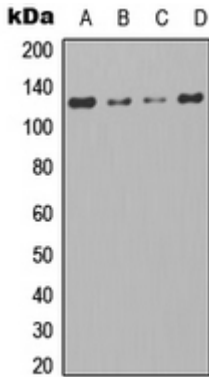
SwissProt: Q7L7X3/Q5F2E8/O88664

Purification: The antibody was purified by immunogen affinity chromatography.

Buffer: Liquid in 0.42% Potassium phosphate, 0.87% Sodium chloride, pH 7.3, 30% glycerol, and 0.01% sodium azide.

WB description:

Western blot analysis of TAO1 expression in 293T (A), Hela (B), NIH3T3 (C), mouse brain (D) whole cell lysates.



IHC description:

Immunohistochemical analysis of TAO1 staining in human lung cancer formalin fixed paraffin embedded tissue section. The section was pre-treated using heat mediated antigen retrieval with sodium citrate buffer (pH 6.0). The section was then incubated with the antibody at room temperature and detected using an HRP conjugated compact polymer system. DAB was used as the chromogen. The section was then counterstained with haematoxylin and mounted with DPX.

Storage:

Store at -20°C. Avoid repeated freeze / thaw cycles.