

Manufacturer/Supplier:

WUXI DONGLIN SCI&TECH DEVELOPMENT CO., LTD

Address: A1-203 Mingpin CityII, No.8 Xihudong Road, Liangxi District
Wuxi Jiangsu Province, China

TELE: 86-510-82732223

FAX: 86-510-82720101-8014

Web : www.dldevelop.com

Email: info@dldevelop.com.cn service@dldevelop.com.cn

Product name: Rabbit anti-STEAP4 Antibody

Catalog: DL93839A

Synonyms: STAMP2; TNFAIP9; Metalloreductase STEAP4;
Six-transmembrane epithelial antigen of prostate 4;
SixTransMembrane protein of prostate 2; Tumor
necrosis factor, alpha-induced protein 9

Immunogen: KLH-conjugated synthetic peptide encompassing a
sequence within the center region of human
STEAP4. The exact sequence is proprietary.

Form: Liquid

Concentration: 1mg/mL

Size: 100 ul/50 ul

Host: Rabbit

Reactivity: Human, Monkey, Pig

Application: WB, IHC, IF/IC

Clonality: Polyclonal

Dilution: WB (1/500 - 1/1000),
IHC (1/100 - 1/200), IF/IC (1/100 -
1/500)

Entrez Gene: 79689

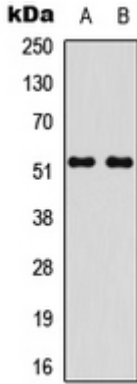
SwissProt: Q687X5

Purification: The antibody was purified by immunogen affinity chromatography.

Buffer: Liquid in 0.42% Potassium phosphate, 0.87% Sodium chloride, pH 7.3, 30% glycerol, and 0.01% sodium azide.

WB description:

Western blot analysis of STEAP4 expression in Jurkat (A), human liver (B) whole cell lysates.

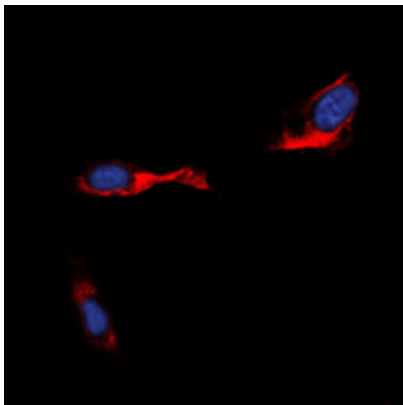


IHC description:

Immunohistochemical analysis of STEAP4 staining in human prostate cancer formalin fixed paraffin embedded tissue section. The section was pre-treated using heat mediated antigen retrieval with sodium citrate buffer (pH 6.0). The section was then incubated with the antibody at room temperature and detected using an HRP conjugated compact polymer system. DAB was used as the chromogen. The section was then counterstained with haematoxylin and mounted with DPX.

IF/ICC description:

Immunofluorescent analysis of STEAP4 staining in Jurkat cells. Formalin-fixed cells were permeabilized with 0.1% Triton X-100 in TBS for 5-10 minutes and blocked with 3% BSA-PBS for 30 minutes at room temperature. Cells were probed with the primary antibo



Storage:

Store at -20°C. Avoid repeated freeze / thaw cycles.