

Manufacturer/Supplier:

WUXI DONGLIN SCI&TECH DEVELOPMENT CO., LTD

Address: A1-203 Mingpin CityII, No.8 Xihudong Road, Liangxi District
Wuxi Jiangsu Province, China

TELE: 86-510-82732223

FAX: 86-510-82720101-8014

Web : www.dldevelop.com

Email: info@dldevelop.com.cn service@dldevelop.com.cn

Product name: Rabbit anti-S6K2 Antibody

Catalog: DL93819A

Synonyms: STK14B; Ribosomal protein S6 kinase beta-2;
S6K-beta-2; S6K2; 70 kDa ribosomal protein S6
kinase 2; P70S6K2; p70-S6K 2; S6 kinase-related
kinase; SRK; Serine/threonine-protein kinase 14B;
p70 ribosomal S6 kinase beta; S6K-beta; p70 S6
kinase beta; p70 S6K

Immunogen: KLH-conjugated synthetic peptide encompassing a
sequence within the C-term region of human S6K2.
The exact sequence is proprietary.

Form: Liquid

Concentration: 1mg/mL

Size: 100 ul/50 ul

Host: Rabbit

Reactivity: Human

Application: WB, IHC

Clonality: Polyclonal

Dilution: WB (1/500 - 1/1000),
IHC (1/100 - 1/200)

Entrez Gene: 6199

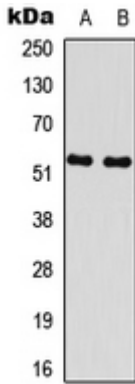
SwissProt: Q9UBS0

Purification: The antibody was purified by immunogen affinity chromatography.

Buffer: Liquid in 0.42% Potassium phosphate, 0.87% Sodium chloride, pH 7.3, 30% glycerol, and 0.01% sodium azide.

WB description:

Western blot analysis of S6K2 expression in Jurkat (A), K562 (B) whole cell lysates.



IHC description:

Immunohistochemical analysis of S6K2 staining in human lung cancer formalin fixed paraffin embedded tissue section. The section was pre-treated using heat mediated antigen retrieval with sodium citrate buffer (pH 6.0). The section was then incubated with the antibody at room temperature and detected using an HRP conjugated compact polymer system. DAB was used as the chromogen. The section was then counterstained with haematoxylin and mounted with DPX.

Storage:

Store at -20°C. Avoid repeated freeze / thaw cycles.