

Manufacturer/Supplier:

WUXI DONGLIN SCI&TECH DEVELOPMENT CO., LTD

Address: A1-203 Mingpin CityII, No.8 Xihudong Road, Liangxi District
Wuxi Jiangsu Province, China

TELE: 86-510-82732223

FAX: 86-510-82720101-8014

Web : www.dldevelop.com

Email: info@dldevelop.com.cn service@dldevelop.com.cn

Product name: Rabbit anti-GPR86 Antibody

Catalog: DL93762A

Synonyms: GPR86; GPR94; P2Y purinoceptor 13; P2Y13;
G-protein coupled receptor 86; G-protein coupled
receptor 94

Immunogen: KLH-conjugated synthetic peptide encompassing a
sequence within the center region of human GPR86.
The exact sequence is proprietary.

Form: Liquid

Concentration: 1mg/mL

Size: 100 ul/50 ul

Host: Rabbit

Reactivity:
Human, Mouse, Rat, Monkey

Application: WB, IF/IC, IP

Clonality: Polyclonal

Dilution: WB (1/500 - 1/1000),
IF/IC (1/100 - 1/500), IP (1/10 -
1/100)

Entrez Gene: 53829/74191/310444

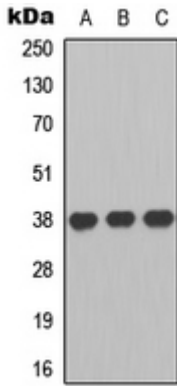
SwissProt: Q9BPV8/Q9D8I2/Q6GUG4

Purification: The antibody was purified by immunogen affinity chromatography.

Buffer: Liquid in 0.42% Potassium phosphate, 0.87% Sodium chloride, pH 7.3, 30% glycerol, and 0.01% sodium azide.

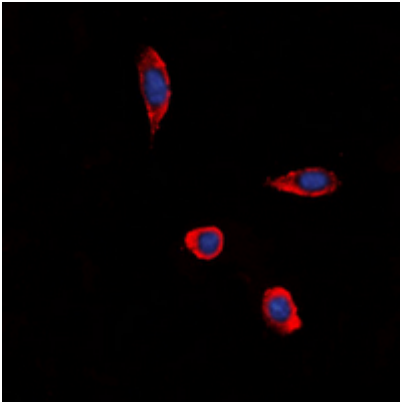
WB description:

Western blot analysis of GPR86 expression in HeLa (A), Juakat (B), HuvEc (C) whole cell lysates.



IF/ICC description:

Immunofluorescent analysis of GPR86 staining in HeLa cells. Formalin-fixed cells were permeabilized with 0.1% Triton X-100 in TBS for 5-10 minutes and blocked with 3% BSA-PBS for 30 minutes at room temperature. Cells were probed with the primary antibody



IP description:

Storage:

Store at -20°C. Avoid repeated freeze / thaw cycles.