

Manufacturer/Supplier:

WUXI DONGLIN SCI&TECH DEVELOPMENT CO., LTD

Address: A1-203 Mingpin CityII, No.8 Xihudong Road, Liangxi District
Wuxi Jiangsu Province, China

TELE: 86-510-82732223

FAX: 86-510-82720101-8014

Web : www.dldevelop.com

Email: info@dldevelop.com.cn service@dldevelop.com.cn

Product name: Rabbit anti-NF-kappaB p100 Antibody

Catalog: DL93758A

Synonyms: LYT10; Nuclear factor NF-kappa-B p100 subunit;
DNA-binding factor KBF2; H2TF1; Lymphocyte
translocation chromosome 10 protein; Nuclear
factor of kappa light polypeptide gene enhancer in
B-cells 2; Oncogene Lyt-10; Lyt10

Immunogen: KLH-conjugated synthetic peptide encompassing a
sequence within the C-term region of human
NF-kappaB p100. The exact sequence is proprietary.

Form: Liquid

Concentration: 1mg/mL

Size: 100 ul/50 ul

Host: Rabbit

Reactivity:

Human, Mouse, Rat, Pig

Application: WB, IF/IC**Clonality:** Polyclonal

Dilution: WB (1/500 - 1/1000),
IF/IC (1/100 - 1/500)

Entrez Gene: 4791/18034

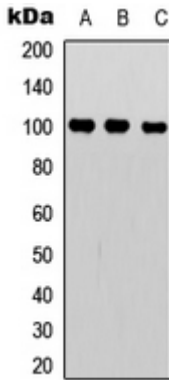
SwissProt: Q00653/Q9WTK5

Purification: The antibody was purified by immunogen affinity chromatography.

Buffer: Liquid in 0.42% Potassium phosphate, 0.87% Sodium chloride, pH 7.3, 30% glycerol, and 0.01% sodium azide.

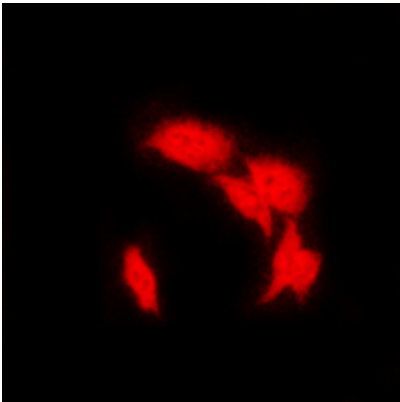
WB description:

Western blot analysis of NF-kappaB p100 expression in Jurkat (A), MCF7 (B), HeLa (C) whole cell lysates.



IF/ICC description:

Immunofluorescent analysis of NF-kappaB p100 staining in HeLa cells. Formalin-fixed cells were permeabilized with 0.1% Triton X-100 in TBS for 5-10 minutes and blocked with 3% BSA-PBS for 30 minutes at room temperature. Cells were probed with the primary



Storage:



Store at -20°C. Avoid repeated freeze / thaw cycles.