

Manufacturer/Supplier:

WUXI DONGLIN SCI&TECH DEVELOPMENT CO., LTD

Address: A1-203 Mingpin CityII, No.8 Xihudong Road, Liangxi District
Wuxi Jiangsu Province, China

TELE: 86-510-82732223

FAX: 86-510-82720101-8014

Web : www.dldevelop.com

Email: info@dldevelop.com.cn service@dldevelop.com.cn

Product name: Rabbit anti-p38 Antibody

Catalog: DL93721A

Synonyms: CSBP; CSBP1; CSBP2; CSPB1; MXI2; SAPK2A;
Mitogen-activated protein kinase 14; MAP kinase
14; MAPK 14; Cytokine suppressive
anti-inflammatory drug-binding protein;
CSAID-binding protein; CSBP; MAP kinase MXI2;
MAX-interacting protein 2; Mitogen-activated

Immunogen: KLH-conjugated synthetic peptide encompassing a
sequence within the center region of human p38.
The exact sequence is proprietary.

Form: Liquid

Concentration: 1mg/mL

Size: 100 ul/50 ul

Host: Rabbit

Reactivity:

Human, Mouse, Rat, Dog, Zebrafish

Application: WB, IHC**Clonality:** Polyclonal

Dilution: WB (1/500 - 1/1000),
IHC (1/100 - 1/200)

Entrez Gene:

1432/26416

SwissProt:

Q16539/P47811/P70618

Purification:

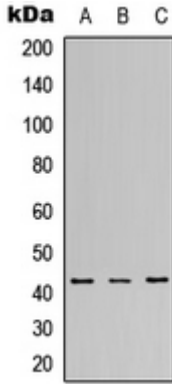
The antibody was purified by immunogen affinity chromatography.

Buffer:

Liquid in 0.42% Potassium phosphate, 0.87% Sodium chloride, pH 7.3, 30% glycerol, and 0.01% sodium azide.

WB description:

Western blot analysis of p38 expression in HEK293T (A), HepG2 (B), K562 (C) whole cell lysates.



IHC description:

Immunohistochemical analysis of p38 staining in human breast cancer formalin fixed paraffin embedded tissue section. The section was pre-treated using heat mediated antigen retrieval with sodium citrate buffer (pH 6.0). The section was then incubated with the antibody at room temperature and detected using an HRP conjugated compact polymer system. DAB was used as the chromogen. The section was then counterstained with haematoxylin and mounted with DPX.

Storage:

Store at -20°C. Avoid repeated freeze / thaw cycles.