

**Manufacturer/Supplier:**

WUXI DONGLIN SCI&TECH DEVELOPMENT CO., LTD

**Address:** A1-203 Mingpin CityII, No.8 Xihudong Road, Liangxi District  
Wuxi Jiangsu Province, China

TELE: 86-510-82732223

FAX: 86-510-82720101-8014

**Web :** [www.dldevelop.com](http://www.dldevelop.com)

Email: [info@dldevelop.com.cn](mailto:info@dldevelop.com.cn)    [service@dldevelop.com.cn](mailto:service@dldevelop.com.cn)

**Product name:** Rabbit anti-ERK1/2 Antibody

**Catalog:** DL93720A

**Synonyms:** MAPK1; ERK2; PRKM1; PRKM2;  
Mitogen-activated protein kinase 1; MAP kinase 1;  
MAPK 1; ERT1; Extracellular signal-regulated  
kinase 2; ERK-2; MAP kinase isoform p42;  
p42-MAPK; Mitogen-activated protein kinase 2;  
MAP kinase 2; MAPK 2; MAPK3; ERK1; PRKM3;  
Mito

**Immunogen:** KLH-conjugated synthetic peptide encompassing a  
sequence within the center region of human  
ERK1/2. The exact sequence is proprietary.

**Form:** Liquid

**Concentration:** 1mg/mL

**Size:** 100 ul/50 ul

**Host:** Rabbit

**Reactivity:**

Human, Mouse, Bovine, Chicken, Zebrafish

**Application:** WB

**Clonality:** Polyclonal

**Dilution:** WB (1/500 - 1/1000)

**Entrez Gene:** 26413; 26417

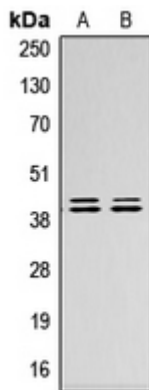
**SwissProt:** P28482; P27361/P63085; Q63844

**Purification:** The antibody was purified by immunogen affinity chromatography.

**Buffer:** Liquid in 0.42% Potassium phosphate, 0.87% Sodium chloride, pH 7.3, 30% glycerol, and 0.01% sodium azide.

**WB description:**

Western blot analysis of ERK1/2 expression in HepG2 (A), NIH3T3 (B) whole cell lysates.



**Storage:**

Store at -20°C. Avoid repeated freeze / thaw cycles.