

Manufacturer/Supplier:

WUXI DONGLIN SCI&TECH DEVELOPMENT CO., LTD

Address: A1-203 Mingpin CityII, No.8 Xihudong Road, Liangxi District
Wuxi Jiangsu Province, China

TELE: 86-510-82732223

FAX: 86-510-82720101-8014

Web : www.dldevelop.com

Email: info@dldevelop.com.cn service@dldevelop.com.cn

Product name: Rabbit anti-SHIP1 Antibody

Catalog: DL93689A

Synonyms: SHIP; SHIP1; Phosphatidylinositol
3,4,5-trisphosphate 5-phosphatase 1; Inositol
polyphosphate-5-phosphatase of 145 kDa; SIP-145;
SH2 domain-containing inositol 5'-phosphatase 1;
SH2 domain-containing inositol phosphatase 1;
SHIP-1; p150Ship; hp51CN

Immunogen: KLH-conjugated synthetic peptide encompassing a
sequence within the C-term region of human SHIP1.
The exact sequence is proprietary.

Form: Liquid

Concentration: 1mg/mL

Size: 100 ul/50 ul

Host: Rabbit

Reactivity:

Human, Mouse, Rat, Bovine

Application: WB**Clonality:** Polyclonal**Dilution:** WB (1/500 - 1/1000)

Entrez Gene: 3635/16331/54259

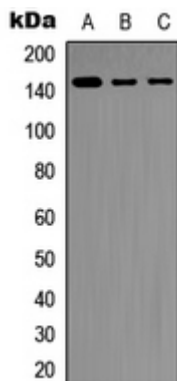
SwissProt: Q92835/Q9ES52/P97573

Purification: The antibody was purified by immunogen affinity chromatography.

Buffer: Liquid in 0.42% Potassium phosphate, 0.87% Sodium chloride, pH 7.3, 30% glycerol, and 0.01% sodium azide.

WB description:

Western blot analysis of SHIP1 expression in Raji (A), THP1 (B), NIH3T3 (C) whole cell lysates.



Storage:

Store at -20°C. Avoid repeated freeze / thaw cycles.