

Manufacturer/Supplier:

WUXI DONGLIN SCI&TECH DEVELOPMENT CO., LTD

Address: A1-203 Mingpin CityII, No.8 Xihudong Road, Liangxi District
Wuxi Jiangsu Province, China

TELE: 86-510-82732223

FAX: 86-510-82720101-8014

Web : www.dldevelop.com

Email: info@dldevelop.com.cn service@dldevelop.com.cn

Product name: Rabbit anti-CD213a1 (pY405) Antibody

Catalog: DL93686A

Synonyms: IL13R; IL13RA; Interleukin-13 receptor subunit
alpha-1; IL-13 receptor subunit alpha-1; IL-13R
subunit alpha-1; IL-13R-alpha-1; IL-13RA1;
Cancer/testis antigen 19; CT19; CD213a1

Immunogen: KLH-conjugated synthetic peptide encompassing a
sequence within the C-term region of human
CD213a1. The exact sequence is proprietary.

Form: Liquid

Concentration: 1mg/mL

Size: 100 ul/50 ul

Host: Rabbit

Reactivity:

Application: WB, IF/IC

Human, Mouse, Monkey

Clonality: Polyclonal

Dilution: WB (1/500 - 1/1000),
IF/IC (1/100 - 1/500)

Entrez Gene: 3597/16164

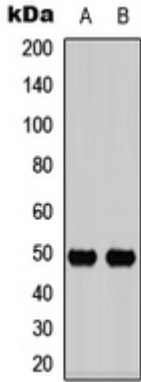
SwissProt: P78552/O09030

Purification: The antibody was purified by immunogen affinity chromatography.

Buffer: Liquid in 0.42% Potassium phosphate, 0.87% Sodium chloride, pH 7.3, 30% glycerol, and 0.01% sodium azide.

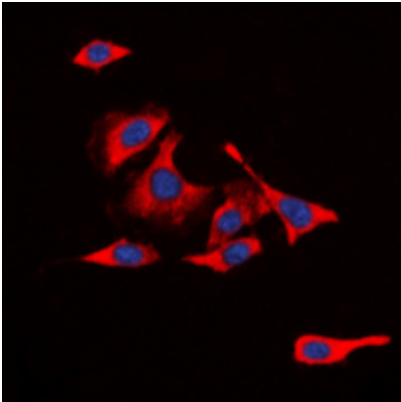
WB description:

Western blot analysis of CD213a1 (pY405) expression in HCT116 (A), HuvEc (B) whole cell lysates.



IF/ICC description:

Immunofluorescent analysis of CD213a1 (pY405) staining in HCT116 cells. Formalin-fixed cells were permeabilized with 0.1% Triton X-100 in TBS for 5-10 minutes and blocked with 3% BSA-PBS for 30 minutes at room temperature. Cells were probed with the prima



Storage:



Store at -20°C. Avoid repeated freeze / thaw cycles.