

Manufacturer/Supplier:

WUXI DONGLIN SCI&TECH DEVELOPMENT CO., LTD

Address: A1-203 Mingpin CityII, No.8 Xihudong Road, Liangxi District
Wuxi Jiangsu Province, China

TELE: 86-510-82732223

FAX: 86-510-82720101-8014

Web : www.dldevelop.com

Email: info@dldevelop.com.cn service@dldevelop.com.cn

Product name: Rabbit anti-Estrogen Receptor beta (pS105)
Antibody

Catalog: DL93636A

Synonyms: ESTRB; NR3A2; Estrogen receptor beta; ER-beta;
Nuclear receptor subfamily 3 group A member 2

Immunogen: KLH-conjugated synthetic peptide encompassing a
sequence within the center region of human
Estrogen Receptor beta. The exact sequence is
proprietary.

Form: Liquid

Concentration: 1mg/mL

Size: 100 ul/50 ul

Host: Rabbit

Reactivity:

Application: WB, IF/IC

Human, Mouse, Rat, Dog

Clonality: Polyclonal

Dilution: WB (1/500 - 1/1000),
IF/IC (1/100 - 1/500)

Entrez Gene: 2100/13983/25149

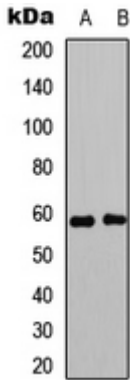
SwissProt: Q92731/O08537/Q62986

Purification: The antibody was purified by immunogen affinity chromatography.

Buffer: Liquid in 0.42% Potassium phosphate, 0.87% Sodium chloride, pH 7.3, 30% glycerol, and 0.01% sodium azide.

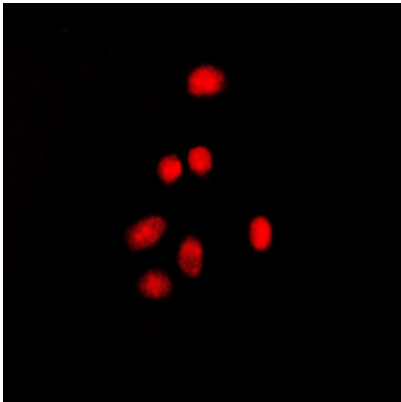
WB description:

Western blot analysis of Estrogen Receptor beta (pS105) expression in MCF7 (A), HeLa (B) whole cell lysates.



IF/ICC description:

Immunofluorescent analysis of Estrogen Receptor beta (pS105) staining in MCF7 cells. Formalin-fixed cells were permeabilized with 0.1% Triton X-100 in TBS for 5-10 minutes and blocked with 3% BSA-PBS for 30 minutes at room temperature. Cells were probed w



Storage:



Store at -20°C. Avoid repeated freeze / thaw cycles.