

Manufacturer/Supplier:

WUXI DONGLIN SCI&TECH DEVELOPMENT CO., LTD

Address: A1-203 Mingpin CityII, No.8 Xihudong Road, Liangxi District
Wuxi Jiangsu Province, China

TELE: 86-510-82732223

FAX: 86-510-82720101-8014

Web : www.dldevelop.com

Email: info@dldevelop.com.cn service@dldevelop.com.cn

Product name: Rabbit anti-EPHB2 Antibody

Catalog: DL93635A

Synonyms: DRT; EPHT3; EPTH3; ERK; HEK5; TYRO5;
Ephrin type-B receptor 2;
Developmentally-regulated Eph-related tyrosine
kinase; ELK-related tyrosine kinase; EPH tyrosine
kinase 3; EPH-like kinase 5; EK5; hEK5; Renal
carcinoma antigen NY-REN-47; Tyrosine-protein
kin

Immunogen: KLH-conjugated synthetic peptide encompassing a
sequence within the C-term region of human
EPHB2. The exact sequence is proprietary.

Form: Liquid

Concentration: 1mg/mL

Size: 100 ul/50 ul

Host: Rabbit

Reactivity: Human, Mouse

Application: WB

Clonality: Polyclonal

Dilution: WB (1/500 - 1/1000)

Entrez Gene: 2048

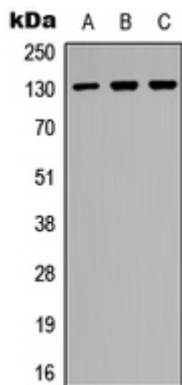
SwissProt: P29323/P54763

Purification: The antibody was purified by immunogen affinity chromatography.

Buffer: Liquid in 0.42% Potassium phosphate, 0.87% Sodium chloride, pH 7.3, 30% glycerol, and 0.01% sodium azide.

WB description:

Western blot analysis of EPHB2 expression in HEK293T (A), Hela (B), mouse brain (C) whole cell lysates.



Storage:

Store at -20°C. Avoid repeated freeze / thaw cycles.