

**Manufacturer/Supplier:**

WUXI DONGLIN SCI&TECH DEVELOPMENT CO., LTD

**Address:** A1-203 Mingpin CityII, No.8 Xihudong Road, Liangxi District  
Wuxi Jiangsu Province, China

TELE: 86-510-82732223

FAX: 86-510-82720101-8014

**Web :** [www.dldevelop.com](http://www.dldevelop.com)

Email: [info@dldevelop.com.cn](mailto:info@dldevelop.com.cn)    [service@dldevelop.com.cn](mailto:service@dldevelop.com.cn)

**Product name:** Rabbit anti-CD115 Antibody

**Catalog:** DL93614A

**Synonyms:** FMS; Macrophage colony-stimulating factor 1 receptor; CSF-1 receptor; CSF-1-R; CSF-1R; M-CSF-R; Proto-oncogene c-Fms; CD115

**Immunogen:** KLH-conjugated synthetic peptide encompassing a sequence within the center region of human CD115. The exact sequence is proprietary.

**Form:** Liquid

**Concentration:** 1mg/mL

**Size:** 100 ul/50 ul

**Host:** Rabbit

**Reactivity:**  
Human, Mouse, Rat, Bovine, Monke

**Application:** WB, IF/IC

y

**Clonality:** Polyclonal

**Dilution:** WB (1/500 - 1/1000),  
IF/IC (1/100 - 1/500)

**Entrez Gene:** 1436/12978

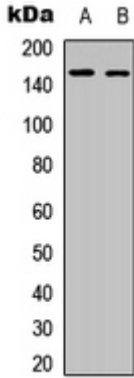
**SwissProt:** P07333/P09581/Q00495

**Purification:** The antibody was purified by immunogen affinity chromatography.

**Buffer:** Liquid in 0.42% Potassium phosphate, 0.87% Sodium chloride, pH 7.3, 30% glycerol, and 0.01% sodium azide.

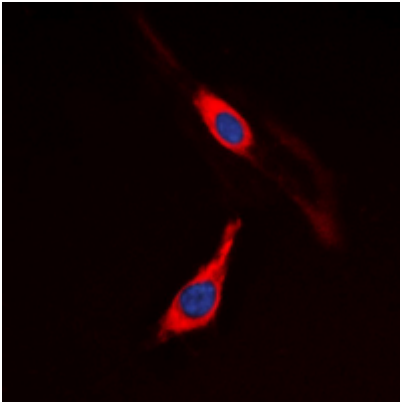
**WB description:**

Western blot analysis of CD115 expression in COLO205 (A), Raw264.7 (B) whole cell lysates.



### IF/ICC description:

Immunofluorescent analysis of CD115 staining in COLO205 cells. Formalin-fixed cells were permeabilized with 0.1% Triton X-100 in TBS for 5-10 minutes and blocked with 3% BSA-PBS for 30 minutes at room temperature. Cells were probed with the primary antibo



### Storage:



Store at -20°C. Avoid repeated freeze / thaw cycles.