

Manufacturer/Supplier:

WUXI DONGLIN SCI&TECH DEVELOPMENT CO., LTD

Address: A1-203 Mingpin CityII, No.8 Xihudong Road. Liangxi District
Wuxi Jiangsu Province, China

TELE: 86-510-82732223

FAX: 86-510-82720101-8014

Web : www.dldevelop.com

Email: info@dldevelop.com.cn service@dldevelop.com.cn

Product name: Rabbit anti-Alpha-crystallin B Antibody

Catalog: DL93611A

Synonyms: CRYA2; Alpha-crystallin B chain;
Alpha(B)-crystallin; Heat shock protein beta-5;
HspB5; Renal carcinoma antigen NY-REN-27;
Rosenthal fiber component

Immunogen: KLH-conjugated synthetic peptide encompassing a
sequence within the N-term region of human
Alpha-crystallin B. The exact sequence is
proprietary.

Form: Liquid

Concentration: 1mg/mL

Size: 100 ul/50 ul

Host: Rabbit

Reactivity:

Human, Mouse, Rat, Bovine, Monkey, Pig, Sheep

Application: WB, IHC**Clonality:** Polyclonal

Dilution: WB (1/500 - 1/1000),
IHC (1/100 - 1/200)

Entrez Gene: 1410/12955/25420

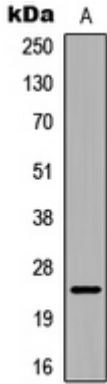
SwissProt: P02511/P23927/P23928

Purification: The antibody was purified by immunogen affinity chromatography.

Buffer: Liquid in 0.42% Potassium phosphate, 0.87% Sodium chloride, pH 7.3, 30% glycerol, and 0.01% sodium azide.

WB description:

Western blot analysis of Alpha-crystallin B expression in K562 (A) whole cell lysates.



IHC description:

Immunohistochemical analysis of Alpha-crystallin B staining in human brain formalin fixed paraffin embedded tissue section. The section was pre-treated using heat mediated antigen retrieval with sodium citrate buffer (pH 6.0). The section was then incubated with the antibody at room temperature and detected using an HRP conjugated compact polymer system. DAB was used as the chromogen. The section was then counterstained with haematoxylin and mounted with DPX.

Storage:

Store at -20°C. Avoid repeated freeze / thaw cycles.