

**Manufacturer/Supplier:**

WUXI DONGLIN SCI&TECH DEVELOPMENT CO., LTD

**Address:** A1-203 Mingpin CityII, No.8 Xihudong Road, Liangxi District  
Wuxi Jiangsu Province, China

TELE: 86-510-82732223

FAX: 86-510-82720101-8014

**Web :** [www.dldevelop.com](http://www.dldevelop.com)

Email: [info@dldevelop.com.cn](mailto:info@dldevelop.com.cn)    [service@dldevelop.com.cn](mailto:service@dldevelop.com.cn)

**Product name:** Rabbit anti-MEKKK6 Antibody

**Catalog:** DL93465A

**Synonyms:** B55; MAP4K6; MINK; YSK2; ZC3;  
Misshapen-like kinase 1; GCK family kinase  
MiNK; MAPK/ERK kinase kinase kinase 6; MEK  
kinase kinase 6; MEKKK 6; Misshapen/NIK-related  
kinase; Mitogen-activated protein kinase kinase  
kinase kinase 6

**Immunogen:** KLH-conjugated synthetic peptide encompassing a  
sequence within the center region of human  
MEKKK6. The exact sequence is proprietary.

**Form:** Liquid

**Concentration:** 1mg/mL

**Size:** 100 ul/50 ul

**Host:** Rabbit

**Reactivity:**

Human, Mouse, Rat, Bovine

**Application:** WB, IHC**Clonality:** Polyclonal

**Dilution:** WB (1/500 - 1/1000),  
IHC (1/100 - 1/200)

**Entrez Gene:** 50488/50932

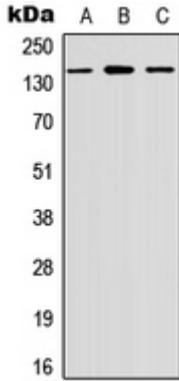
**SwissProt:** Q8N4C8/Q9JM52/F1LP90

**Purification:** The antibody was purified by immunogen affinity chromatography.

**Buffer:** Liquid in 0.42% Potassium phosphate, 0.87% Sodium chloride, pH 7.3, 30% glycerol, and 0.01% sodium azide.

**WB description:**

Western blot analysis of MEKKK6 expression in HEK293T (A), HepG2 (B), HeLa (C) whole cell lysates.



### IHC description:

Immunohistochemical analysis of MEKKK6 staining in human brain formalin fixed paraffin embedded tissue section. The section was pre-treated using heat mediated antigen retrieval with sodium citrate buffer (pH 6.0). The section was then incubated with the antibody at room temperature and detected using an HRP conjugated compact polymer system. DAB was used as the chromogen. The section was then counterstained with haematoxylin and mounted with DPX.

### Storage:

Store at -20°C. Avoid repeated freeze / thaw cycles.