

Manufacturer/Supplier:

WUXI DONGLIN SCI&TECH DEVELOPMENT CO., LTD

Address: A1-203 Mingpin CityII, No.8 Xihudong Road, Liangxi District
Wuxi Jiangsu Province, China

TELE: 86-510-82732223

FAX: 86-510-82720101-8014

Web : www.dldevelop.com

Email: info@dldevelop.com.cn service@dldevelop.com.cn

Product name: Rabbit anti-PRKD1/2/3 (pS738/S742) Antibody

Catalog: DL93448A

Synonyms: PRKD1; PKD; PKD1; PRKCM;
Serine/threonine-protein kinase D1; Protein kinase
C mu type; Protein kinase D; nPKC-D1; nPKC-mu;
PRKD2; PKD2; HSPC187; Serine/threonine-protein
kinase D2; nPKC-D2; PRKD3; EPK2; PRKCN;
Serine/threonine-protein kinase D3; Protein k

Immunogen: KLH-conjugated synthetic peptide encompassing a
sequence within the C-term region of human
PRKD1/2/3 (pS738/S742). The exact sequence is
proprietary.

Form: Liquid

Concentration: 1mg/mL

Size: 100 ul/50 ul

Host: Rabbit

Reactivity:

Human, Mouse, Rat, Bovine, Monkey, Pig, Sheep

Application: WB, IHC

Clonality: Polyclonal

Dilution: WB (1/500 - 1/1000),
IHC (1/100 - 1/200)

Entrez Gene: 18760; 101540; 75292/85421; 292658

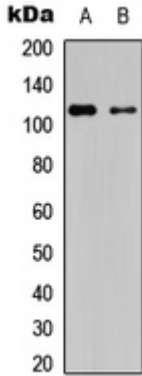
SwissProt: Q15139; Q9BZL6; O94806/Q62101; Q8BZ03;
Q8K1Y2/Q9WTQ1; Q5XIS9

Purification: The antibody was purified by immunogen affinity chromatography.

Buffer: Liquid in 0.42% Potassium phosphate, 0.87% Sodium chloride, pH 7.3, 30% glycerol, and 0.01% sodium azide.

WB description:

Western blot analysis of PRKD1/2/3 (pS738/S742) expression in HT29 (A), rat astrocytes (B) whole cell lysates.



IHC description:

Immunohistochemical analysis of PRKD1/2/3 (pS738/S742) staining in human breast cancer formalin fixed paraffin embedded tissue section. The section was pre-treated using heat mediated antigen retrieval with sodium citrate buffer (pH 6.0). The section was then incubated with the antibody at room temperature and detected using an HRP conjugated compact polymer system. DAB was used as the chromogen. The section was then counterstained with haematoxylin and mounted with DPX.

Storage:

Store at -20°C. Avoid repeated freeze / thaw cycles.