

Manufacturer/Supplier:

WUXI DONGLIN SCI&TECH DEVELOPMENT CO., LTD

Address: A1-203 Mingpin CityII, No.8 Xihudong Road, Liangxi District
Wuxi Jiangsu Province, China

TELE: 86-510-82732223

FAX: 86-510-82720101-8014

Web : www.dldevelop.com

Email: info@dldevelop.com.cn service@dldevelop.com.cn

Product name: Rabbit anti-IGF1 Receptor (pY1161) Antibody

Catalog: DL93435A

Synonyms: IGF1R; Insulin-like growth factor 1 receptor;
Insulin-like growth factor I receptor; IGF-I receptor;
CD221; INSR; Insulin receptor; IR; CD220

Immunogen: KLH-conjugated synthetic peptide encompassing a sequence within the C-term region of human IGF1 Receptor (pY1161). The exact sequence is proprietary.

Form: Liquid

Concentration: 1mg/mL

Size: 100 ul/50 ul

Host: Rabbit

Reactivity:

Application: WB, IHC, IF/IC

Human, Mouse, Rat, Bovine, Chicken, Zebrafish

Clonality: Polyclonal

Dilution: WB (1/500 - 1/1000),
IHC (1/100 - 1/200), IF/IC (1/100 - 1/500)

Entrez Gene: 3480/16001; 16337/25718

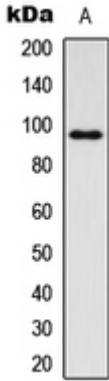
SwissProt: P08069; P06213/Q60751; P15208/P24062; P15127

Purification: The antibody was purified by immunogen affinity chromatography.

Buffer: Liquid in 0.42% Potassium phosphate, 0.87% Sodium chloride, pH 7.3, 30% glycerol, and 0.01% sodium azide.

WB description:

Western blot analysis of IGF1 Receptor (pY1161) expression in HeLa IGF-treated (A) whole cell lysates.

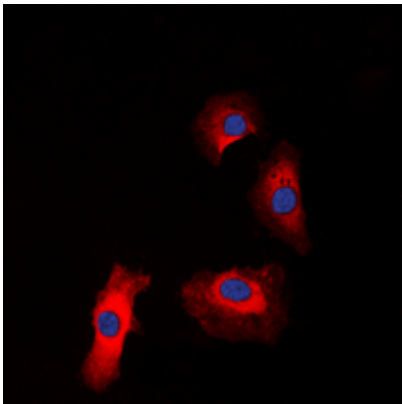


IHC description:

Immunohistochemical analysis of IGF1 Receptor (pY1161) staining in human breast cancer formalin fixed paraffin embedded tissue section. The section was pre-treated using heat mediated antigen retrieval with sodium citrate buffer (pH 6.0). The section was then incubated with the antibody at room temperature and detected using an HRP conjugated compact polymer system. DAB was used as the chromogen. The section was then counterstained with haematoxylin and mounted with DPX.

IF/ICC description:

Immunofluorescent analysis of IGF1 Receptor (pY1161) staining in HeLa cells. Formalin-fixed cells were permeabilized with 0.1% Triton X-100 in TBS for 5-10 minutes and blocked with 3% BSA-PBS for 30 minutes at room temperature. Cells were probed with the



Storage:

Store at -20°C. Avoid repeated freeze / thaw cycles.