

Manufacturer/Supplier:

WUXI DONGLIN SCI&TECH DEVELOPMENT CO., LTD

Address: A1-203 Mingpin CityII, No.8 Xihudong Road. Liangxi District
Wuxi Jiangsu Province, China

TELE: 86-510-82732223

FAX: 86-510-82720101-8014

Web : www.dldevelop.com

Email: info@dldevelop.com.cn service@dldevelop.com.cn

Product name: Rabbit anti-Histone Deacetylase 5/9 (pS259/220)
Antibody

Catalog: DL93428A

Synonyms: HDAC5; KIAA0600; Histone deacetylase 5; HD5;
Antigen NY-CO-9; HDAC9; HDAC7; HDAC7B;
HDRP; KIAA0744; MITR; Histone deacetylase 9;
HD9; Histone deacetylase 7B; HD7; HD7b; Histone
deacetylase-related protein; MEF2-interacting
transcription repressor MITR

Immunogen: KLH-conjugated synthetic peptide encompassing a
sequence within the center region of human Histone
Deacetylase 5/9 (pS259/220). The exact sequence is
proprietary.

Form: Liquid

Concentration: 1mg/mL

Size: 100 ul/50 ul

Host: Rabbit

Reactivity:

Human, Mouse, Bovine, Chicken, Dog, Pig, Rabbit

Application: WB, IHC

Clonality: Polyclonal

Dilution: WB (1/500 - 1/1000),
IHC (1/100 - 1/200)

Entrez Gene: 79221

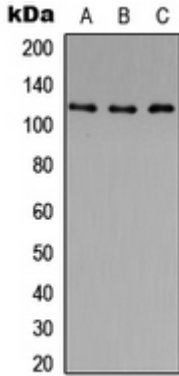
SwissProt: Q9UQL6; Q9UKV0/Q9Z2V6; Q99N13

Purification: The antibody was purified by immunogen affinity chromatography.

Buffer: Liquid in 0.42% Potassium phosphate, 0.87% Sodium chloride, pH 7.3, 30% glycerol, and 0.01% sodium azide.

WB description:

Western blot analysis of Histone Deacetylase 5/9 (pS259/220) expression in PC3 (A), HeLa (B), NIH3T3 (C) whole cell lysates.



IHC description:

Immunohistochemical analysis of Histone Deacetylase 5/9 (pS259/220) staining in human breast cancer formalin fixed paraffin embedded tissue section. The section was pre-treated using heat mediated antigen retrieval with sodium citrate buffer (pH 6.0). The section was then incubated with the antibody at room temperature and detected using an HRP conjugated compact polymer system. DAB was used as the chromogen. The section was then counterstained with haematoxylin and mounted with DPX.

Storage:

Store at -20°C. Avoid repeated freeze / thaw cycles.