

Manufacturer/Supplier:

WUXI DONGLIN SCI&TECH DEVELOPMENT CO., LTD

Address: A1-203 Mingpin CityII, No.8 Xihudong Road, Liangxi District
Wuxi Jiangsu Province, China

TELE: 86-510-82732223

FAX: 86-510-82720101-8014

Web : www.dldevelop.com

Email: info@dldevelop.com.cn service@dldevelop.com.cn

Product name: Rabbit anti-4EBP1 (pT69) Antibody

Catalog: DL93398A

Synonyms: EIF4EBP1; Eukaryotic translation initiation factor
4E-binding protein 1; 4E-BP1; eIF4E-binding
protein 1; Phosphorylated heat- and acid-stable
protein regulated by insulin 1; PHAS-I

Immunogen: KLH-conjugated synthetic peptide encompassing a
sequence within the center region of human 4EBP1
(pT69). The exact sequence is proprietary.

Form: Liquid

Concentration: 1mg/mL

Size: 100 ul/50 ul

Host: Rabbit

Reactivity:

Application: WB, IHC

Human, Mouse, Rat, Monkey

Clonality: Polyclonal

Dilution: WB (1/500 - 1/1000),
IHC (1/100 - 1/200)

Entrez Gene: 1978/13685/116636

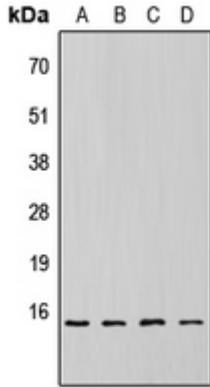
SwissProt: Q13541/Q60876/Q62622

Purification: The antibody was purified by immunogen affinity chromatography.

Buffer: Liquid in 0.42% Potassium phosphate, 0.87% Sodium chloride, pH 7.3, 30% glycerol, and 0.01% sodium azide.

WB description:

Western blot analysis of 4EBP1 (pT69) expression in HEK293T (A), NS-1 (B), H9C2 (C), rat liver (D) whole cell lysates.



IHC description:

Immunohistochemical analysis of 4EBP1 (pT69) staining in human breast cancer formalin fixed paraffin embedded tissue section. The section was pre-treated using heat mediated antigen retrieval with sodium citrate buffer (pH 6.0). The section was then incubated with the antibody at room temperature and detected using an HRP conjugated compact polymer system. DAB was used as the chromogen. The section was then counterstained with haematoxylin and mounted with DPX.

Storage:

Store at -20°C. Avoid repeated freeze / thaw cycles.