

Manufacturer/Supplier:

WUXI DONGLIN SCI&TECH DEVELOPMENT CO., LTD

Address: A1-203 Mingpin CityII, No.8 Xihudong Road, Liangxi District
Wuxi Jiangsu Province, China

TELE: 86-510-82732223

FAX: 86-510-82720101-8014

Web : www.dldevelop.com

Email: info@dldevelop.com.cn service@dldevelop.com.cn

Product name: Rabbit anti-C/EBP beta (pT235) Antibody

Catalog: DL93372A

Synonyms: TCF5; CCAAT/enhancer-binding protein beta;
C/EBP beta; Liver activator protein; LAP;
Liver-enriched inhibitory protein; LIP; Nuclear
factor NF-IL6; Transcription factor 5; TCF-5

Immunogen: KLH-conjugated synthetic peptide encompassing a
sequence within the center region of human C/EBP
beta (pT235). The exact sequence is proprietary.

Form: Liquid

Concentration: 1mg/mL

Size: 100 ul/50 ul

Host: Rabbit

Reactivity:

Application: WB, IHC, IF/IC

Human, Mouse, Rat, Bovine, Pig

Clonality: Polyclonal

Dilution: WB (1/500 - 1/1000),
IHC (1/100 - 1/200), IF/IC (1/100 -
1/500)

Entrez Gene: 1051/12608/24253

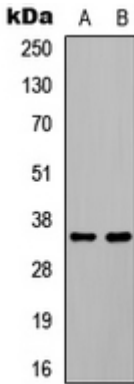
SwissProt: P17676/P28033/P21272

Purification: The antibody was purified by immunogen affinity chromatography.

Buffer: Liquid in 0.42% Potassium phosphate, 0.87% Sodium chloride, pH 7.3, 30% glycerol, and 0.01% sodium azide.

WB description:

Western blot analysis of C/EBP beta (pT235) expression in HEK293T EGF-treated (A), COLO205 EGF-treated (B) whole cell lysates.

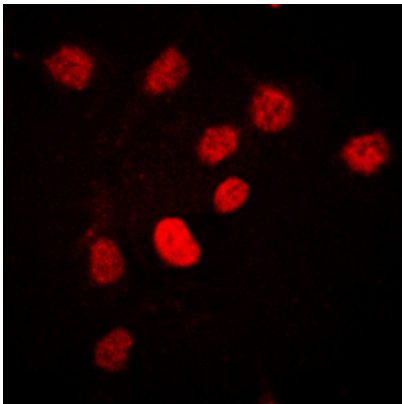


IHC description:

Immunohistochemical analysis of C/EBP beta (pT235) staining in human lung cancer formalin fixed paraffin embedded tissue section. The section was pre-treated using heat mediated antigen retrieval with sodium citrate buffer (pH 6.0). The section was then incubated with the antibody at room temperature and detected using an HRP conjugated compact polymer system. DAB was used as the chromogen. The section was then counterstained with haematoxylin and mounted with DPX.

IF/ICC description:

Immunofluorescent analysis of C/EBP beta (pT235) staining in HEK293T cells. Formalin-fixed cells were permeabilized with 0.1% Triton X-100 in TBS for 5-10 minutes and blocked with 3% BSA-PBS for 30 minutes at room temperature. Cells were probed with the p



Storage:

Store at -20°C. Avoid repeated freeze / thaw cycles.