

Manufacturer/Supplier:

WUXI DONGLIN SCI&TECH DEVELOPMENT CO., LTD

Address: A1-203 Mingpin CityII, No.8 Xihudong Road, Liangxi District
Wuxi Jiangsu Province, China

TELE: 86-510-82732223

FAX: 86-510-82720101-8014

Web : www.dldevelop.com

Email: info@dldevelop.com.cn service@dldevelop.com.cn

Product name: Rabbit anti-c-CBL (pY700) Antibody

Catalog: DL93360A

Synonyms: CBL2; RNF55; E3 ubiquitin-protein ligase CBL;
Casitas B-lineage lymphoma proto-oncogene;
Proto-oncogene c-Cbl; RING finger protein 55;
Signal transduction protein CBL

Immunogen: KLH-conjugated synthetic peptide encompassing a
sequence within the C-term region of human c-CBL
(pY700). The exact sequence is proprietary.

Form: Liquid

Concentration: 1mg/mL

Size: 100 ul/50 ul

Host: Rabbit

Reactivity: Human, Mouse, Rat

Application: WB, IHC, IF/IC

Clonality: Polyclonal

Dilution: WB (1/500 - 1/1000),
IHC (1/100 - 1/200), IF/IC (1/100 -
1/500)

Entrez Gene: 867/12402

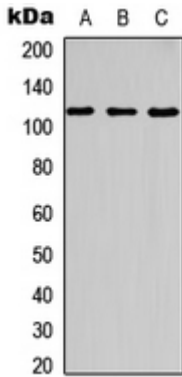
SwissProt: P22681/P22682

Purification: The antibody was purified by immunogen affinity chromatography.

Buffer: Liquid in 0.42% Potassium phosphate, 0.87% Sodium chloride, pH 7.3, 30% glycerol, and 0.01% sodium azide.

WB description:

Western blot analysis of c-CBL (pY700) expression in HT29 UV-treated (A), NIH3T3 (B), rat kidney (C) whole cell lysates.

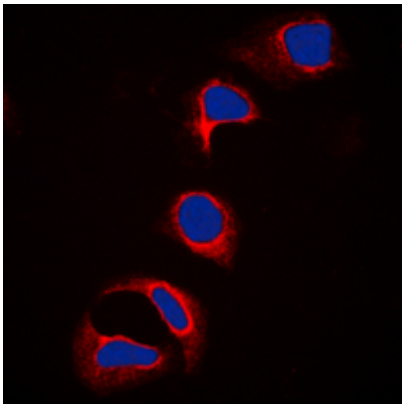


IHC description:

Immunohistochemical analysis of c-CBL (pY700) staining in human lymph node formalin fixed paraffin embedded tissue section. The section was pre-treated using heat mediated antigen retrieval with sodium citrate buffer (pH 6.0). The section was then incubated with the antibody at room temperature and detected using an HRP conjugated compact polymer system. DAB was used as the chromogen. The section was then counterstained with haematoxylin and mounted with DPX.

IF/ICC description:

Immunofluorescent analysis of c-CBL (pY700) staining in HeLa cells. Formalin-fixed cells were permeabilized with 0.1% Triton X-100 in TBS for 5-10 minutes and blocked with 3% BSA-PBS for 30 minutes at room temperature. Cells were probed with the primary a



Storage:

Store at -20°C. Avoid repeated freeze / thaw cycles.