

Manufacturer/Supplier:

WUXI DONGLIN SCI&TECH DEVELOPMENT CO., LTD

Address: A1-203 Mingpin CityII, No.8 Xihudong Road, Liangxi District
Wuxi Jiangsu Province, China

TELE: 86-510-82732223

FAX: 86-510-82720101-8014

Web : www.dldevelop.com

Email: info@dldevelop.com.cn service@dldevelop.com.cn

Product name: Rabbit anti-CaMK2 beta/gamma (pT287) Antibody

Catalog: DL93357A

Synonyms: CAMK2B; CAM2; CAMK2; CAMKB;
Calcium/calmodulin-dependent protein kinase type
II subunit beta; CaM kinase II subunit beta;
CaMK-II subunit beta; CAMK2G; CAMK;
CAMK-II; CAMKG;
Calcium/calmodulin-dependent protein kinase type
II subunit gamma; CaM kinase II

Immunogen: KLH-conjugated synthetic peptide encompassing a
sequence within the center region of human CaMK2
beta/gamma (pT287). The exact sequence is
proprietary.

Form: Liquid

Concentration: 1mg/mL

Size: 100 ul/50 ul

Host: Rabbit

Reactivity:

Human, Mouse, Rat, Bovine, Monkey, Pig, Rabbit

Application: WB, IHC

Clonality: Polyclonal

Dilution: WB (1/500 - 1/1000),
IHC (1/100 - 1/200)

Entrez Gene: 12323; 12325/24245; 171140

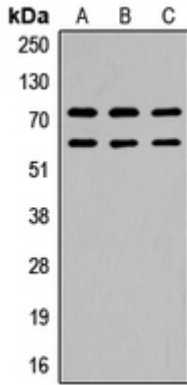
SwissProt: Q13554; Q13555/P28652; Q923T9/P08413; P11730

Purification: The antibody was purified by immunogen affinity chromatography.

Buffer: Liquid in 0.42% Potassium phosphate, 0.87% Sodium chloride, pH 7.3, 30% glycerol, and 0.01% sodium azide.

WB description:

Western blot analysis of CaMK2 beta/gamma (pT287) expression in Raji (A), mouse brain (B), rat brain (C) whole cell lysates.



IHC description:

Immunohistochemical analysis of CaMK2 beta/gamma (pT287) staining in human brain formalin fixed paraffin embedded tissue section. The section was pre-treated using heat mediated antigen retrieval with sodium citrate buffer (pH 6.0). The section was then incubated with the antibody at room temperature and detected using an HRP conjugated compact polymer system. DAB was used as the chromogen. The section was then counterstained with haematoxylin and mounted with DPX.

Storage:

Store at -20°C. Avoid repeated freeze / thaw cycles.