

Manufacturer/Supplier:

WUXI DONGLIN SCI&TECH DEVELOPMENT CO., LTD

Address: A1-203 Mingpin CityII, No.8 Xihudong Road, Liangxi District
Wuxi Jiangsu Province, China

TELE: 86-510-82732223

FAX: 86-510-82720101-8014

Web : www.dldevelop.com

Email: info@dldevelop.com.cn service@dldevelop.com.cn

Product name: Rabbit anti-PS1D Antibody

Catalog: DL93316A

Synonyms: PS1D; Nucleolar protein of 40 kDa; pNO40;
Pnn-interacting nucleolar protein; Putative S1
RNA-binding domain protein; PS1D protein; Zinc
finger CCHC domain-containing protein 17

Immunogen: KLH-conjugated synthetic peptide encompassing a
sequence within the center region of human PS1D.
The exact sequence is proprietary.

Form: Liquid

Concentration: 1mg/mL

Size: 100 ul/50 ul

Host: Rabbit

Reactivity:

Application: WB, IHC

Human, Mouse, Rat, Monkey

Clonality: Polyclonal

Dilution: WB (1/500 - 1/1000),
IHC (1/100 - 1/200)

Entrez Gene: 51538/619605

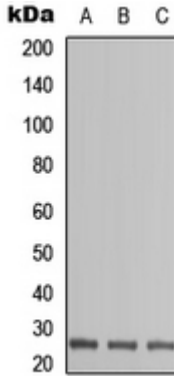
SwissProt: Q9NP64/Q9ESX4

Purification: The antibody was purified by immunogen affinity chromatography.

Buffer: Liquid in 0.42% Potassium phosphate, 0.87% Sodium chloride, pH 7.3, 30% glycerol, and 0.01% sodium azide.

WB description:

Western blot analysis of PS1D expression in HEK293T (A), Raw264.7 (B), H9C2 (C) whole cell lysates.



IHC description:

Immunohistochemical analysis of PS1D staining in human breast cancer formalin fixed paraffin embedded tissue section. The section was pre-treated using heat mediated antigen retrieval with sodium citrate buffer (pH 6.0). The section was then incubated with the antibody at room temperature and detected using an HRP conjugated compact polymer system. DAB was used as the chromogen. The section was then counterstained with haematoxylin and mounted with DPX.

Storage:

Store at -20°C. Avoid repeated freeze / thaw cycles.