

Manufacturer/Supplier:

WUXI DONGLIN SCI&TECH DEVELOPMENT CO., LTD

Address: A1-203 Mingpin CityII, No.8 Xihudong Road, Liangxi District
Wuxi Jiangsu Province, China

TELE: 86-510-82732223

FAX: 86-510-82720101-8014

Web : www.dldevelop.com

Email: info@dldevelop.com.cn service@dldevelop.com.cn

Product name: Rabbit anti-p65 (pT60) Antibody

Catalog: DL93312A

Synonyms: HSN2; KDP; KIAA0344; PRKWINK1;
Serine/threonine-protein kinase WNK1; Erythrocyte
65 kDa protein; p65; Kinase deficient protein;
Protein kinase lysine-deficient 1; Protein kinase
with no lysine 1; hWNK1

Immunogen: KLH-conjugated synthetic peptide encompassing a
sequence within the N-term region of human p65
(pT60). The exact sequence is proprietary.

Form: Liquid

Concentration: 1mg/mL

Size: 100 ul/50 ul

Host: Rabbit

Reactivity:

Human, Mouse, Rat, Pig

Application: WB, IHC**Clonality:** Polyclonal

Dilution: WB (1/500 - 1/1000),
IHC (1/100 - 1/200)

Entrez Gene: 65125/232341/116477

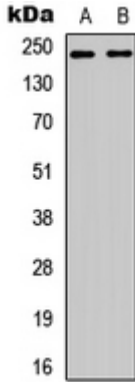
SwissProt: Q9H4A3/P83741/Q9JIH7

Purification: The antibody was purified by immunogen affinity chromatography.

Buffer: Liquid in 0.42% Potassium phosphate, 0.87% Sodium chloride, pH 7.3, 30% glycerol, and 0.01% sodium azide.

WB description:

Western blot analysis of p65 (pT60) expression in HEK293T EGF-treated (A), Jurkat EGF-treated (B) whole cell lysates.



IHC description:

Immunohistochemical analysis of p65 (pT60) staining in human lung cancer formalin fixed paraffin embedded tissue section. The section was pre-treated using heat mediated antigen retrieval with sodium citrate buffer (pH 6.0). The section was then incubated with the antibody at room temperature and detected using an HRP conjugated compact polymer system. DAB was used as the chromogen. The section was then counterstained with haematoxylin and mounted with DPX.

Storage:

Store at -20°C. Avoid repeated freeze / thaw cycles.