

Manufacturer/Supplier:

WUXI DONGLIN SCI&TECH DEVELOPMENT CO., LTD

Address: A1-203 Mingpin CityII, No.8 Xihudong Road, Liangxi District
Wuxi Jiangsu Province, China

TELE: 86-510-82732223

FAX: 86-510-82720101-8014

Web : www.dldevelop.com

Email: info@dldevelop.com.cn service@dldevelop.com.cn

Product name: Rabbit anti-SOX6 Antibody

Catalog: DL93252A

Synonyms: Transcription factor SOX-6

Immunogen: KLH-conjugated synthetic peptide encompassing a sequence within the N-term region of human SOX6.
The exact sequence is proprietary.

Form: Liquid

Concentration: 1mg/mL

Size: 100 ul/50 ul

Host: Rabbit

Reactivity:
Human, Mouse, Rat, Bovine, Dog, Monkey, Pig

Application: WB, IHC, ChIP

Clonality: Polyclonal

Dilution: WB (1/500 - 1/1000),
IHC (1/100 - 1/200), ChIP (Use at
an assay dependent concentration)

Entrez Gene: 55553/20679

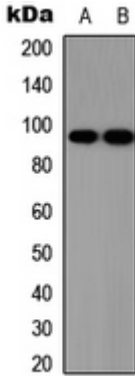
SwissProt: P35712/P40645

Purification: The antibody was purified by immunogen affinity
chromatography.

Buffer: Liquid in 0.42% Potassium phosphate, 0.87%
Sodium chloride, pH 7.3, 30% glycerol, and 0.01%
sodium azide.

WB description:

Western blot analysis of SOX6 expression in HEK293T (A), Jurkat
(B) whole cell lysates.



IHC description:

Immunohistochemical analysis of SOX6 staining in human lung cancer formalin fixed paraffin embedded tissue section. The section was pre-treated using heat mediated antigen retrieval with sodium citrate buffer (pH 6.0). The section was then incubated with the antibody at room temperature and detected using an HRP conjugated compact polymer system. DAB was used as the chromogen. The section was then counterstained with haematoxylin and mounted with DPX.

ChIP description:

Storage:

Store at -20°C. Avoid repeated freeze / thaw cycles.