

**Manufacturer/Supplier:**

WUXI DONGLIN SCI&TECH DEVELOPMENT CO., LTD

**Address:** A1-203 Mingpin CityII, No.8 Xihudong Road, Liangxi District  
Wuxi Jiangsu Province, China

TELE: 86-510-82732223

FAX: 86-510-82720101-8014

**Web :** [www.dldevelop.com](http://www.dldevelop.com)

Email: [info@dldevelop.com.cn](mailto:info@dldevelop.com.cn) [service@dldevelop.com.cn](mailto:service@dldevelop.com.cn)

**Product name:** Rabbit anti-SH2D1A Antibody

**Catalog:** DL93231A

**Synonyms:** DSHP; SAP; SH2 domain-containing protein 1A;  
Duncan disease SH2-protein; Signaling lymphocytic  
activation molecule-associated protein;  
SLAM-associated protein; T-cell signal transduction  
molecule SAP

**Immunogen:** KLH-conjugated synthetic peptide encompassing a  
sequence within the center region of human  
SH2D1A. The exact sequence is proprietary.

**Form:** Liquid

**Concentration:** 1mg/mL

**Size:** 100 ul/50 ul

**Host:** Rabbit

**Reactivity:**

Human, Mouse, Rat, Bovine, Monkey, Pig

**Application:** WB**Clonality:** Polyclonal**Dilution:** WB (1/500 - 1/1000)**Entrez Gene:**

4068/20400/501502

**SwissProt:**

O60880/O88890/B2RZ59

**Purification:**

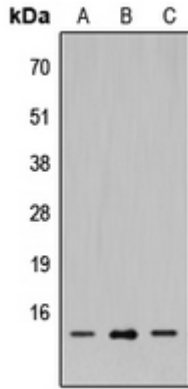
The antibody was purified by immunogen affinity chromatography.

**Buffer:**

Liquid in 0.42% Potassium phosphate, 0.87% Sodium chloride, pH 7.3, 30% glycerol, and 0.01% sodium azide.

**WB description:**

Western blot analysis of SH2D1A expression in HEK293T (A), Raw264.7 (B), PC12 (C) whole cell lysates.



**Storage:**

Store at -20°C. Avoid repeated freeze / thaw cycles.