

**Manufacturer/Supplier:**

WUXI DONGLIN SCI&TECH DEVELOPMENT CO., LTD

**Address:** A1-203 Mingpin CityII, No.8 Xihudong Road, Liangxi District  
Wuxi Jiangsu Province, China

TELE: 86-510-82732223

FAX: 86-510-82720101-8014

**Web :** [www.dldevelop.com](http://www.dldevelop.com)

Email: [info@dldevelop.com.cn](mailto:info@dldevelop.com.cn) [service@dldevelop.com.cn](mailto:service@dldevelop.com.cn)

**Product name:** Rabbit anti-SGK1/2 (pT256/253) Antibody

**Catalog:** DL93229A

**Synonyms:** SGK1;SGK;Serine/threonine-protein kinase Sgk1;  
Serum/glucocorticoid-regulated kinase 1; SGK2;  
Serine/threonine-protein kinase Sgk2;  
Serum/glucocorticoid-regulated kinase 2

**Immunogen:** KLH-conjugated synthetic peptide encompassing a  
sequence within the center region of human SGK1/2  
(pT256/253). The exact sequence is proprietary.

**Form:** Liquid

**Concentration:** 1mg/mL

**Size:** 100 ul/50 ul

**Host:** Rabbit

**Reactivity:**

**Application:** WB, IHC, IF/IC

Human, Mouse, Rat, Bovine, Chicken, Rabbit, Zebrafish

**Clonality:** Polyclonal

**Dilution:** WB (1/500 - 1/1000),  
IHC (1/100 - 1/200), IF/IC (1/100 - 1/500)

**Entrez Gene:** 20393; 27219/171497

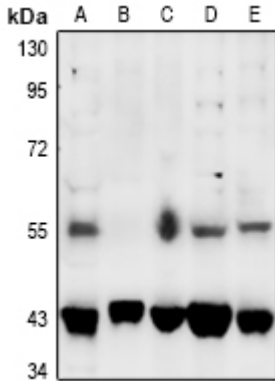
**SwissProt:** O00141; Q9HBY8/Q9WVC6; Q9QZS5/Q06226;  
Q8R4U9

**Purification:** The antibody was purified by immunogen affinity chromatography.

**Buffer:** Liquid in 0.42% Potassium phosphate, 0.87% Sodium chloride, pH 7.3, 30% glycerol, and 0.01% sodium azide.

**WB description:**

Western blot analysis of SGK1/2 (pT256/253) expression in HeLa (A), HCC827(B), HEK293T (C), rat brain (D), mouse brain (E) whole cell lysates.

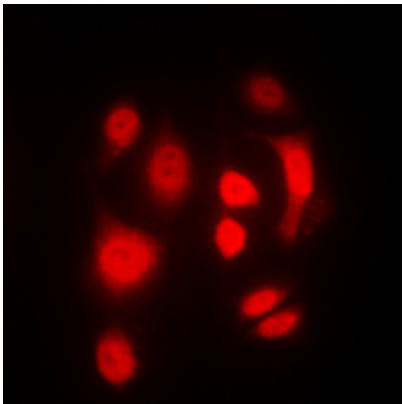


### IHC description:

Immunohistochemical analysis of SGK1/2 (pT256/253) staining in human lung cancer formalin fixed paraffin embedded tissue section. The section was pre-treated using heat mediated antigen retrieval with sodium citrate buffer (pH 6.0). The section was then incubated with the antibody at room temperature and detected using an HRP conjugated compact polymer system. DAB was used as the chromogen. The section was then counterstained with haematoxylin and mounted with DPX.

### IF/ICC description:

Immunofluorescent analysis of SGK1/2 (pT256/253) staining in HeLa cells. Formalin-fixed cells were permeabilized with 0.1% Triton X-100 in TBS for 5-10 minutes and blocked with 3% BSA-PBS for 30 minutes at room temperature. Cells were probed with the prim



**Storage:**

Store at -20°C. Avoid repeated freeze / thaw cycles.