

Manufacturer/Supplier:

WUXI DONGLIN SCI&TECH DEVELOPMENT CO., LTD

Address: A1-203 Mingpin CityII, No.8 Xihudong Road, Liangxi District
Wuxi Jiangsu Province, China

TELE: 86-510-82732223

FAX: 86-510-82720101-8014

Web : www.dldevelop.com

Email: info@dldevelop.com.cn service@dldevelop.com.cn

Product name: Rabbit anti-S6K1 Antibody

Catalog: DL93221A

Synonyms: STK14A; Ribosomal protein S6 kinase beta-1;
S6K-beta-1; S6K1; 70 kDa ribosomal protein S6
kinase 1; P70S6K1; p70-S6K 1; Ribosomal protein
S6 kinase I; Serine/threonine-protein kinase 14A;
p70 ribosomal S6 kinase alpha; p70 S6 kinase
alpha; p70 S6K-alpha;

Immunogen: KLH-conjugated synthetic peptide encompassing a
sequence within the center region of human S6K1.
The exact sequence is proprietary.

Form: Liquid

Concentration: 1mg/mL

Size: 100 ul/50 ul

Host: Rabbit

Reactivity:

Human, Mouse, Rat, Chicken, Dog,
Monkey, Pig, Rabbit

Application: WB, IHC, IF/IC

Clonality: Polyclonal

Dilution: WB (1/500 - 1/1000),
IHC (1/100 - 1/200), IF/IC (1/100 -
1/500)

Entrez Gene: 6198/72508/83840

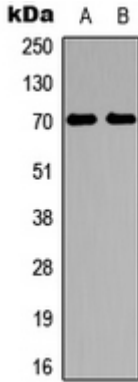
SwissProt: P23443/Q8BSK8/P67999

Purification: The antibody was purified by immunogen affinity
chromatography.

Buffer: Liquid in 0.42% Potassium phosphate, 0.87%
Sodium chloride, pH 7.3, 30% glycerol, and 0.01%
sodium azide.

WB description:

Western blot analysis of S6K1 expression in HeLa (A), HepG2 (B)
whole cell lysates.

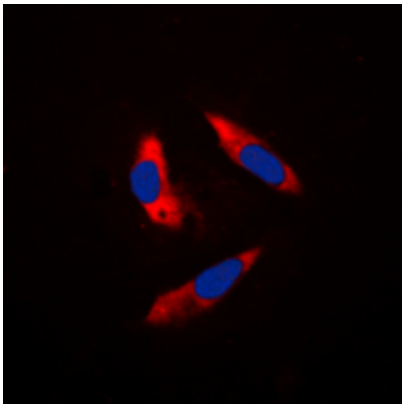


IHC description:

Immunohistochemical analysis of S6K1 staining in human lung cancer formalin fixed paraffin embedded tissue section. The section was pre-treated using heat mediated antigen retrieval with sodium citrate buffer (pH 6.0). The section was then incubated with the antibody at room temperature and detected using an HRP conjugated compact polymer system. DAB was used as the chromogen. The section was then counterstained with haematoxylin and mounted with DPX.

IF/ICC description:

Immunofluorescent analysis of S6K1 staining in Hela cells. Formalin-fixed cells were permeabilized with 0.1% Triton X-100 in TBS for 5-10 minutes and blocked with 3% BSA-PBS for 30 minutes at room temperature. Cells were probed with the primary antibody i



Storage:

Store at -20°C. Avoid repeated freeze / thaw cycles.