

**Manufacturer/Supplier:**

WUXI DONGLIN SCI&TECH DEVELOPMENT CO., LTD

**Address:** A1-203 Mingpin CityII, No.8 Xihudong Road, Liangxi District  
Wuxi Jiangsu Province, China

**TELE:** 86-510-82732223

**FAX:** 86-510-82720101-8014

**Web :** [www.dldevelop.com](http://www.dldevelop.com)

**Email:** [info@dldevelop.com.cn](mailto:info@dldevelop.com.cn)    [service@dldevelop.com.cn](mailto:service@dldevelop.com.cn)

**Product name:** Rabbit anti-PPP2R5D Antibody

**Catalog:** DL93167A

**Synonyms:** Serine/threonine-protein phosphatase 2A 56 kDa  
regulatory subunit delta isoform; PP2A B subunit  
isoform B'-delta; PP2A B subunit isoform  
B56-delta; PP2A B subunit isoform PR61-delta;  
PP2A B subunit isoform R5-delta

**Immunogen:** KLH-conjugated synthetic peptide encompassing a  
sequence within the C-term region of human  
PPP2R5D. The exact sequence is proprietary.

**Form:** Liquid

**Concentration:** 1mg/mL

**Size:** 100 ul/50 ul

**Host:** Rabbit

**Reactivity:**

Human,Bovine,Monkey,Rabbit

**Application:** WB, IHC**Clonality:** Polyclonal

**Dilution:** WB (1/500 - 1/1000),  
IHC (1/100 - 1/200)

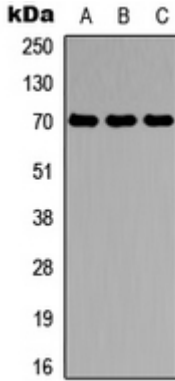
**Entrez Gene:** 5528**SwissProt:** Q14738

**Purification:** The antibody was purified by immunogen affinity chromatography.

**Buffer:** Liquid in 0.42% Potassium phosphate, 0.87% Sodium chloride, pH 7.3, 30% glycerol, and 0.01% sodium azide.

**WB description:**

Western blot analysis of PPP2R5D expression in SHSY5Y (A), HuvEc (B), HEK293T (C) whole cell lysates.



### IHC description:

Immunohistochemical analysis of PPP2R5D staining in human lung cancer formalin fixed paraffin embedded tissue section. The section was pre-treated using heat mediated antigen retrieval with sodium citrate buffer (pH 6.0). The section was then incubated with the antibody at room temperature and detected using an HRP conjugated compact polymer system. DAB was used as the chromogen. The section was then counterstained with haematoxylin and mounted with DPX.

### Storage:

Store at -20°C. Avoid repeated freeze / thaw cycles.