

Manufacturer/Supplier:

WUXI DONGLIN SCI&TECH DEVELOPMENT CO., LTD

Address: A1-203 Mingpin CityII, No.8 Xihudong Road. Liangxi District
Wuxi Jiangsu Province, China

TELE: 86-510-82732223

FAX: 86-510-82720101-8014

Web : www.dldevelop.com

Email: info@dldevelop.com.cn service@dldevelop.com.cn

Product name: Rabbit anti-POM121 Antibody

Catalog: DL93163A

Synonyms: POM121; KIAA0618; NUP121; POM121A;
Nuclear envelope pore membrane protein POM 121;
Nuclear envelope pore membrane protein POM
121A; Nucleoporin Nup121; Pore membrane
protein of 121 kDa; POM121B; Putative nuclear
envelope pore membrane protein POM 121B; PO

Immunogen: KLH-conjugated synthetic peptide encompassing a
sequence within the C-term region of human
POM121. The exact sequence is proprietary.

Form: Liquid

Concentration: 1mg/mL

Size: 100 ul/50 ul

Host: Rabbit

Reactivity: Human, Mouse, Rat

Application: WB, IHC

Clonality: Polyclonal

Dilution: WB (1/500 - 1/1000),
IHC (1/100 - 1/200)

Entrez Gene: 107939/113975

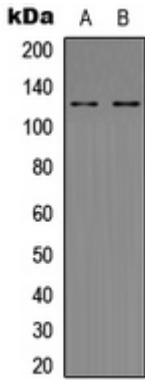
SwissProt: Q96HA1; A6NF01; A8CG34/Q8K3Z9/P52591

Purification: The antibody was purified by immunogen affinity chromatography.

Buffer: Liquid in 0.42% Potassium phosphate, 0.87% Sodium chloride, pH 7.3, 30% glycerol, and 0.01% sodium azide.

WB description:

Western blot analysis of POM121 expression in HeLa (A), HEK293T (B) whole cell lysates.



IHC description:

Immunohistochemical analysis of POM121 staining in human skin formalin fixed paraffin embedded tissue section. The section was pre-treated using heat mediated antigen retrieval with sodium citrate buffer (pH 6.0). The section was then incubated with the antibody at room temperature and detected using an HRP conjugated compact polymer system. DAB was used as the chromogen. The section was then counterstained with haematoxylin and mounted with DPX.

Storage:

Store at -20°C. Avoid repeated freeze / thaw cycles.