

**Manufacturer/Supplier:**

WUXI DONGLIN SCI&TECH DEVELOPMENT CO., LTD

**Address:** A1-203 Mingpin CityII, No.8 Xihudong Road, Liangxi District  
Wuxi Jiangsu Province, China

TELE: 86-510-82732223

FAX: 86-510-82720101-8014

**Web :** [www.dldevelop.com](http://www.dldevelop.com)

Email: [info@dldevelop.com.cn](mailto:info@dldevelop.com.cn)    [service@dldevelop.com.cn](mailto:service@dldevelop.com.cn)

**Product name:** Rabbit anti-NF-kappaB p100 (pS865) Antibody

**Catalog:** DL93123A

**Synonyms:** LYT10; Nuclear factor NF-kappa-B p100 subunit; DNA-binding factor KBF2; H2TF1; Lymphocyte translocation chromosome 10 protein; Nuclear factor of kappa light polypeptide gene enhancer in B-cells 2; Oncogene Lym-10; Lym10

**Immunogen:** KLH-conjugated synthetic peptide encompassing a sequence within the C-term region of human NF-kappaB p100 (pS865). The exact sequence is proprietary.

**Form:** Liquid

**Concentration:** 1mg/mL

**Size:** 100 ul/50 ul

**Host:** Rabbit

**Reactivity:**

Human, Mouse, Rat, Bovine, Chicken, Pig

**Application:** WB, IHC, IF/IC, IP**Clonality:** Polyclonal

**Dilution:** E (1/5000 - 1/10000),  
WB (1/500 - 1/1000), IHC (1/100 -  
1/200), IF/IC (1/100 - 1/500)

**Entrez Gene:**

4087/17126/29357

**SwissProt:**

Q15796/Q62432/O70436

**Purification:**

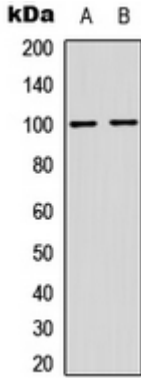
The antibody was purified by immunogen affinity chromatography.

**Buffer:**

Liquid in 0.42% Potassium phosphate, 0.87% Sodium chloride, pH 7.3, 30% glycerol, and 0.01% sodium azide.

**WB description:**

Western blot analysis of SMAD2 (pS467) expression in human kidney (A), mouse brain (B), rat brain (C) whole cell lysates.

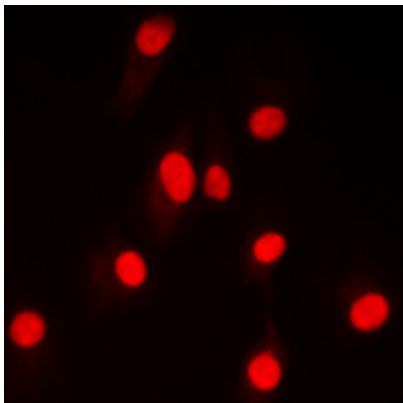


### IHC description:

Immunohistochemical analysis of SMAD2 (pS467) staining in human lung cancer formalin fixed paraffin embedded tissue section. The section was pre-treated using heat mediated antigen retrieval with sodium citrate buffer (pH 6.0). The section was then incubated with the antibody at room temperature and detected using an HRP conjugated compact polymer system. DAB was used as the chromogen. The section was then counterstained with haematoxylin and mounted with DPX.

### IF/ICC description:

Immunofluorescent analysis of SMAD2 (pS467) staining in HeLa cells. Formalin-fixed cells were permeabilized with 0.1% Triton X-100 in TBS for 5-10 minutes and blocked with 3% BSA-PBS for 30 minutes at room temperature. Cells were probed with the primary a



**IP description:**

**Storage:**

Store at -20°C. Avoid repeated freeze / thaw cycles.