

Manufacturer/Supplier:

WUXI DONGLIN SCI&TECH DEVELOPMENT CO., LTD

Address: A1-203 Mingpin CityII, No.8 Xihudong Road, Liangxi District
Wuxi Jiangsu Province, China

TELE: 86-510-82732223

FAX: 86-510-82720101-8014

Web : www.dldevelop.com

Email: info@dldevelop.com.cn service@dldevelop.com.cn

Product name: Rabbit anti-NF-kappaB p105/p50 (pS337) Antibody

Catalog: DL93122A

Synonyms: Nuclear factor NF-kappa-B p105 subunit;
DNA-binding factor KBF1; EBP-1; Nuclear factor
of kappa light polypeptide gene enhancer in B-cells
1

Immunogen: KLH-conjugated synthetic peptide encompassing a
sequence within the center region of human
NF-kappaB p105/p50 (pS337). The exact sequence
is proprietary.

Form: Liquid

Concentration: 1mg/mL

Size: 100 ul/50 ul

Host: Rabbit

Reactivity:

Human, Mouse, Rat, Bovine, Chicken, Dog, Pig

Application: WB, IHC, IF/IC**Clonality:** Polyclonal

Dilution: WB (1/500 - 1/1000),
IHC (1/100 - 1/200), IF/IC (1/100 - 1/500)

Entrez Gene: 4790/18033

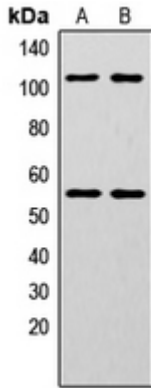
SwissProt: P19838/P25799/Q63369

Purification: The antibody was purified by immunogen affinity chromatography.

Buffer: Liquid in 0.42% Potassium phosphate, 0.87% Sodium chloride, pH 7.3, 30% glycerol, and 0.01% sodium azide.

WB description:

Western blot analysis of NF-kappaB p105/p50 (pS337) expression in HeLa (A), MCF7 (B) whole cell lysates.

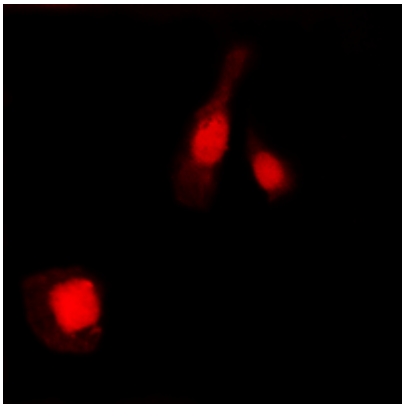


IHC description:

Immunohistochemical analysis of NF-kappaB p105/p50 (pS337) staining in human prostate cancer formalin fixed paraffin embedded tissue section. The section was pre-treated using heat mediated antigen retrieval with sodium citrate buffer (pH 6.0). The section was then incubated with the antibody at room temperature and detected using an HRP conjugated compact polymer system. DAB was used as the chromogen. The section was then counterstained with haematoxylin and mounted with DPX.

IF/ICC description:

Immunofluorescent analysis of NF-kappaB p105/p50 (pS337) staining in MCF7 cells. Formalin-fixed cells were permeabilized with 0.1% Triton X-100 in TBS for 5-10 minutes and blocked with 3% BSA-PBS for 30 minutes at room temperature. Cells were probed with



Storage:

Store at -20°C. Avoid repeated freeze / thaw cycles.