

Manufacturer/Supplier:

WUXI DONGLIN SCI&TECH DEVELOPMENT CO., LTD

Address: A1-203 Mingpin CityII, No.8 Xihudong Road, Liangxi District
Wuxi Jiangsu Province, China

TELE: 86-510-82732223

FAX: 86-510-82720101-8014

Web : www.dldevelop.com

Email: info@dldevelop.com.cn service@dldevelop.com.cn

Product name: Rabbit anti-p40 phox Antibody

Catalog: DL93112A

Synonyms: SH3PXD4; Neutrophil cytosol factor 4; NCF-4;
Neutrophil NADPH oxidase factor 4; SH3 and PX
domain-containing protein 4; p40-phox; p40phox

Immunogen: KLH-conjugated synthetic peptide encompassing a
sequence within the center region of human p40
phox. The exact sequence is proprietary.

Form: Liquid

Concentration: 1mg/mL

Size: 100 ul/50 ul

Host: Rabbit

Reactivity: Human, Pig, Rabbit

Application: WB, IHC

Clonality: Polyclonal

Dilution: WB (1/500 - 1/1000),
IHC (1/100 - 1/200)

Entrez Gene: 4689/17972

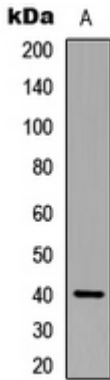
SwissProt: Q15080/P97369

Purification: The antibody was purified by immunogen affinity chromatography.

Buffer: Liquid in 0.42% Potassium phosphate, 0.87% Sodium chloride, pH 7.3, 30% glycerol, and 0.01% sodium azide.

WB description:

Western blot analysis of p40 phox expression in MCF7 (A) whole cell lysates.



IHC description:

Immunohistochemical analysis of p40 phox staining in human tonsil formalin fixed paraffin embedded tissue section. The section was pre-treated using heat mediated antigen retrieval with sodium citrate buffer (pH 6.0). The section was then incubated with the antibody at room temperature and detected using an HRP conjugated compact polymer system. DAB was used as the chromogen. The section was then counterstained with haematoxylin and mounted with DPX.

Storage:

Store at -20°C. Avoid repeated freeze / thaw cycles.