

**Manufacturer/Supplier:**

WUXI DONGLIN SCI&TECH DEVELOPMENT CO., LTD

**Address:** A1-203 Mingpin CityII, No.8 Xihudong Road, Liangxi District  
Wuxi Jiangsu Province, China

TELE: 86-510-82732223

FAX: 86-510-82720101-8014

**Web :** [www.dldevelop.com](http://www.dldevelop.com)

Email: [info@dldevelop.com.cn](mailto:info@dldevelop.com.cn) [service@dldevelop.com.cn](mailto:service@dldevelop.com.cn)

**Product name:** Rabbit anti-LIF Antibody

**Catalog:** DL93058A

**Synonyms:** HILDA; Leukemia inhibitory factor; LIF;  
Differentiation-stimulating factor; D factor;  
Melanoma-derived LPL inhibitor; MLPLI;  
Emfilermin

**Immunogen:** KLH-conjugated synthetic peptide encompassing a  
sequence within the C-term region of human LIF.  
The exact sequence is proprietary.

**Form:** Liquid

**Concentration:** 1mg/mL

**Size:** 100 ul/50 ul

**Host:** Rabbit

**Reactivity:**

**Application:** WB

Human, Mouse, Rat, Bovine, Pig, Sheep

**Clonality:** Polyclonal

**Dilution:** WB (1/500 - 1/1000)

**Entrez Gene:** 3976/16878

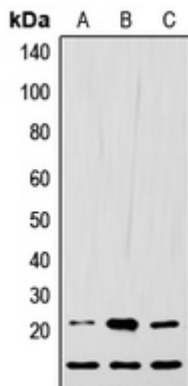
**SwissProt:** P15018/P09056/P17777

**Purification:** The antibody was purified by immunogen affinity chromatography.

**Buffer:** Liquid in 0.42% Potassium phosphate, 0.87% Sodium chloride, pH 7.3, 30% glycerol, and 0.01% sodium azide.

**WB description:**

Western blot analysis of LIF expression in HEK293T (A), Raw264.7 (B), H9C2 (C) whole cell lysates.



### Storage:

Store at -20°C. Avoid repeated freeze / thaw cycles.